

# BITS



## 1/4" HEX DRIVE POZIDRIV INSERT BIT

- Chrome vanadium steel
- Precision machined for perfect fit
- Forged and ground for long life and durability

STANLEY	i			
0-68-945	1 x 25 mm	X	3 x 1	3253560689452
0-68-949	2 x 25 mm	X	3 x 1	3253560689490
0-68-953	3 x 25 mm	X	3 x 1	3253560689537
1-68-945	1 x 25 mm	X	25 x 1	3253561689451
1-68-949	2 x 25 mm	X	25 x 1	3253561689499
1-68-953	3 x 25 mm	X	25 x 1	3253561689536
3-68-945	1 x 25 mm	-	100 x 1	3253563689459
3-68-949	2 x 25 mm	-	100 x 1	3253563689497
1-68-948	2 x 50 mm	X	100 x 1	3253561689482



## 1/4" HEX DRIVE PHILLIPS INSERT BIT

- Chrome vanadium steel
- Precision machined for perfect fit
- Forged and ground for long life and durability
- 25 mm length

STANLEY	i			
0-68-942	1 x 25 mm	X	3 x 1	3253560689421
0-68-946	2 x 25 mm	X	3 x 1	3253560689469
0-68-950	3 x 25 mm	X	3 x 1	3253560689506
1-68-942	1 x 25 mm	-	25 x 1	3253561689420
1-68-946	2 x 25 mm	-	25 x 1	3253561689468
1-68-947	2 x 50 mm	-	25 x 1	3253561689475
1-68-950	3 x 25 mm	-	25 x 1	3253561689505
3-68-942	1 x 25 mm	-	100 x 1	3253563689428
3-68-946	2 x 25 mm	-	100 x 1	3253563689466



## 1/4" HEX DRIVE TORX BIT

- Chrome vanadium steel
- Precision machined for perfect fit
- Forged and ground for long life and durability

STANLEY	i			
0-68-839	T10 x 25 mm	X	3 x 1	3253560688394
0-68-841	T15 x 25 mm	X	3 x 1	3253560688417
0-68-842	T20 x 25 mm	X	3 x 1	3253560688424
0-68-843	T25 x 25 mm	X	3 x 1	3253560688431
1-68-839	T10 x 25 mm	-	25 x 1	3253561688393
1-68-841	T15 x 25 mm	-	25 x 1	3253561688416
1-68-842	T20 x 25 mm	-	25 x 1	3253561688423
1-68-843	T25 x 25 mm	-	25 x 1	3253561688430
1-68-845	T30 x 25 mm	-	25 x 1	3253561688454
1-68-846	T40 x 25 mm	-	25 x 1	3253561688461



## 5/16" HEX DRIVE PHILLIPS INSERT BIT

- Precision machined for perfect fit
- Tip machined to assure no slip from screw head ISO compliant 32 mm in length
- Forged and ground for long life and durability

STANLEY	i			
1-68-940	Ph 4 x 32 mm	-	20 x 1	3253561689406

## BIT FOR SLOTTED HEAD

- 1/4" DRIVE BIT SLOTTED HEAD - 39 mm
- Conforms to ISO 1173 and DIN 3126 standards



STANLEY	i			
1-13-697	4 x 39 mm	X	3 x 1	3253561136979
1-13-698	4,5 x 39 mm	X	3 x 1	3253561136986
1-13-699	5,5 x 39 mm	X	3 x 1	3253561136993
1-17-769	6,5 x 39 mm	X	3 x 1	3253561177699
1-17-770	8 x 39 mm	X	3 x 1	3253561177705

## BIT FOR TORX HEAD

- Conforms to ISO 1173 and DIN 3126 standards
- 1/4" Drive Bit for Torx - 25 mm



STANLEY	i			
1-17-771	T6 x 25 mm	X	3 x 1	3253561177712
1-17-772	T7 x 25 mm	X	3 x 1	3253561177729
1-17-773	T8 x 25 mm	X	3 x 1	3253561177736
1-17-774	T9 x 25 mm	X	3 x 1	3253561177743
1-17-775	T10 x 25 mm	X	3 x 1	3253561177750
1-17-776	T15 x 25 mm	X	3 x 1	3253561177767
1-17-777	T20 x 25 mm	X	3 x 1	3253561177774
1-17-778	T25 x 25 mm	X	3 x 1	3253561177781
1-17-779	T30 x 25 mm	X	3 x 1	3253561177798
1-17-780	T40 x 25 mm	X	3 x 1	3253561177804

## BIT FOR TROX - TAMPER RESISTANT

- Conforms to ISO 1173 and DIN 3126 standards
- Long reach provides access to recessed fasteners
- 1/4" Drive Bit for Tamper Proof Torx - 25 mm



STANLEY	i			
1-17-781	TT10 x 25 mm	X	3 x 1	3253561177811
1-17-782	TT15 x 25 mm	X	3 x 1	3253561177825
1-17-783	TT20 x 25 mm	X	3 x 1	3253561177835
1-17-784	TT25 x 25 mm	X	3 x 1	3253561177842
1-17-785	TT27 x 25 mm	X	3 x 1	3253561177859
1-17-786	TT30 x 25 mm	X	3 x 1	3253561177866
1-17-787	TT40 x 25 mm	X	3 x 1	3253561177873

## METRIC BIT FOR HEXAGON SOCKET HEADS

- Conforms to ISO 1173 and DIN 3126 standards
- 1/4" Drive Slotted Head Bit - 25 mm



STANLEY	i			
1-13-650	2 x 25 mm	X	6 x 1	3253561136504
1-13-651	2,5 x 25 mm	X	6 x 1	3253561136511
1-13-652	3 x 25 mm	X	6 x 1	3253561136528
1-17-768	4 x 25 mm	X	6 x 1	3253561177682
1-13-654	5 x 25 mm	X	6 x 1	3253561136542
1-13-655	6 x 25 mm	X	6 x 1	3253561136559
1-13-656	7 x 25 mm	X	6 x 1	3253561136566
1-13-657	8 x 25 mm	X	6 x 1	3253561136573
1-13-658	10 x 25 mm	X	6 x 1	3253561136580

## 1/4" DRIVE POWER BIT

- Chrome vanadium steel
- Forged and ground for long life and durability
- Precision machined for perfect fit



STANLEY	i			
1-68-991	Ph 1 x 50 mm	-	10 x 1	3253561689918
1-68-992	Ph 2 x 50 mm	-	10 x 1	3253561689925
1-68-926	Pz 2 x 50 mm	X	10 x 1	3253561689260
3-68-804	Pz 2 x 70 mm	-	10 x 1	3253563688049
3-68-807	Pz 2 x 100 mm	-	10 x 1	3253563688070
1-68-979	Pz 3 x 50 mm	X	10 x 1	3253561689796

## POZI DRIVE BIT

- Conforms to ISO 1173 and DIN 3126 standards
- 1/4" Bit for Pz - 50 mm



STANLEY	i			
1-13-637	Pz1 x 50 mm	X	6 x 1	3253561136375
1-13-638	Pz2 x 50 mm	X	6 x 1	3253561136382
1-13-639	Pz3 x 50 mm	X	6 x 1	3253561136399

## PHILLIPS 1/4" DRIVE BIT

- Drive Bit with groove for PH Head - 50 mm
- Conforms to ISO 1173 and DIN 3126 standards



STANLEY	i			
1-13-691	Ph1 x 50 mm	X	6 x 1	3253561136917
1-13-692	Ph2 x 50 mm	X	6 x 1	3253561136924
1-13-693	Ph3 x 50 mm	X	6 x 1	3253561136931

## METRIC BIT FOR HEXAGON SOCKET HEADS

- Conforms to ISO 1173 and DIN 3126 standards
- 1/4" Drive Head Bit - 50mm



STANLEY	i			
1-13-659	3 x 50 mm	X	6 x 1	3253561136597
1-13-660	4 x 50 mm	X	6 x 1	3253561136603
1-13-661	5 x 50 mm	X	6 x 1	3253561136610
1-13-662	6 x 50 mm	X	6 x 1	3253561136627

## DOUBLE ENDED PHILLIPS INSERT BIT

- Double mould square drive 1/4" blade
- For general purpose use Precision machined for perfect fit Forged and ground for long life and durability



				
1-68-784	Ph 1 + 2	X	10 x 1	3253561687846

## DOUBLE ENDED POZIDRIV INSERT BIT

- Double mould square drive 1/4" blade
- For general purpose use Precision machined for perfect fit Forged and ground for long life and durability



				
1-68-786	Pz 1 + 2	X	10 x 1	3253561687860

## DRIVE POZI TORSION BIT

- 1/4" TORSION BIT for PZ head - 25 mm
- Conforms to ISO 1173 and DIN 3126 standards



				
1-13-631	Pz1	X	6 x 1	3253561136313
1-13-632	Pz2	X	6 x 1	3253561136320
1-13-633	Pz3	X	6 x 1	3253561136337

## TORSION BITS FOR PHILLIPS HEADS 1/4"

- 1/4" Drive Torsion Bit for Ph Head - 25 mm
- Conforms to ISO 1173 and DIN 3126 standards

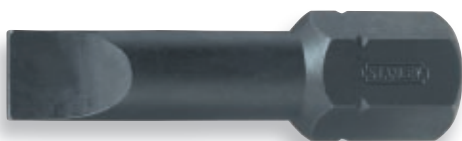


				
1-13-685	1	X	6 x 1	3253561136856
1-13-686	2	X	6 x 1	3253561136863
1-13-687	3	X	6 x 1	3253561136870

# IMPACT BITS

## IMPACT BIT FOR SLOTTED HEADS

- 1/2" IMPACT BIT for Slotted HEAD - 50 mm
- Conforms to ISO 1173 and DIN 3126 standards
- Burnished finish
- For use with impact screwdrivers



STANLEY	i			
1-13-673	8	X	3 x 1	3253561136733
1-13-674	10	X	3 x 1	3253561136757
1-13-675	12	X	3 x 1	3253561136740
1-13-677	14	X	3 x 1	3253561136771

## IMPACT BIT FOR METRIC SOCKET HEAD

- 1/2" IMPACT BIT for METRIC SOCKET HEAD - 50 mm
- Conforms to ISO 1173 and DIN 3126 standards
- Burnished finish
- For use with impact screwdrivers



STANLEY	i			
1-13-663	3	X	3 x 1	3253561136634
1-13-664	4	X	3 x 1	3253561136641
1-13-665	5	X	3 x 1	3253561136658
1-13-666	6	X	3 x 1	3253561136665
1-13-667	8	X	3 x 1	3253561136672
1-13-668	10	X	3 x 1	3253561136689
1-13-669	12	X	3 x 1	3253561136696
1-13-670	14	X	3 x 1	3253561136702
1-13-671	17	X	3 x 1	3253561136710
1-13-672	19	X	3 x 1	3253561136726

## IMPACT BITS FOR TORX HEADS

- 5/16" DRIVE IMPACT BIT for TORX HEAD
- Conforms to ISO 1173 and DIN 3126 standards
- Burnished finish
- For use with impact screwdrivers



STANLEY	i			
1-13-678	T20	X	3 x 1	3253561136788
1-13-679	T25	X	3 x 1	3253561136795
1-13-680	T30	X	3 x 1	3253561136801
1-13-681	T35	X	3 x 1	3253561136818
1-13-682	T40	X	3 x 1	3253561136825
1-13-683	T45	X	3 x 1	3253561136832
1-13-684	T50	X	3 x 1	3253561136842



## EXTRA-HARD TORSION BITS FOR PHILIPS HEADS

- 1/4" Extra Hard Torsion Drive Bit for Phillips Head (25mm)
- Conforms to ISO 1173 and DIN 3126 standards
- Very tough bits

STANLEY	i			
1-13-688	Ph1 x 25 mm	X	6 x 1	3253561136887
1-13-689	Ph2 x 25 mm	X	6 x 1	3253561136894
1-13-690	Ph3 x 25 mm	X	6 x 1	3253561136900



## EXTRA HARD POZI TORSION BIT

- Conforms to ISO 1173 and DIN 3126 standards
- 1/4" Extra Hard Torsion Bit for Pz Head - 25 mm

STANLEY	i			
1-13-634	Pz1 x 25 mm	X	6 x 1	3253561136344
1-13-635	Pz2 x 25 mm	X	6 x 1	3253561136351
1-13-636	Pz3 x 25 mm	X	6 x 1	3253561136368



## TITANIUM BIT FOR DRIVE PHILLIPS

- 1/4" Drive Titanium Bit With Groove for Ph Head - 50 mm
- Conforms to ISO 1173 and DIN 3126 standards
- Tin coating

STANLEY	i			
1-13-694	Ph1 x 50 mm	X	6 x 1	3253561136948
1-13-695	Ph2 x 50 mm	X	6 x 1	3253561136955
1-13-696	Ph3 x 50 mm	X	6 x 1	3253561136962



## EXTRA HARD BIT FOR PZ

- 1/4" Extra Hard Bit for Pz - 50 mm
- Conforms to ISO 1173 and DIN 3126 standards
- Tin coating

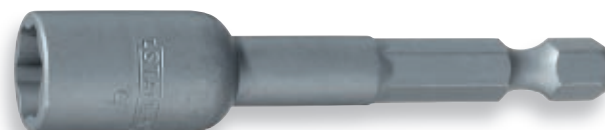
STANLEY	i			
1-13-640	Pz1 x 50 mm	X	6 x 1	3253561136405
1-13-641	Pz2 x 50 mm	X	6 x 1	3253561136412
1-13-642	Pz3 x 50 mm	X	6 x 1	3253561136424



## SPECIAL BOARDING SOCKET

- 6-point magnetic 10 mm socket
- Chrome vanadium, forged and ground steel

STANLEY	i			
3-68-214	L=65 mm	-	5 x 1	3253563682146



## MAGNETIC HEX NUT SETTER

- 1/4" Magnetic Hex Nut Setter
- Magnet holds fastener on bit

STANLEY	i			
1-13-643	7 x 65 mm	-	1	3253561136436
1-13-644	8 x 65 mm	-	1	3253561136443
1-13-645	9 x 65 mm	-	1	3253561136450
1-13-646	10 x 65 mm	-	1	3253561136467



## HEX DIRECT DRIVE SOCKET ADAPTOR

- Adaptor for a 1/4" socket Precision machined for perfect fit
- Forged and ground for long life and durability

1-68-799	L = 50 mm	-	10 x 1	3253561687990



## SQUARE DRIVE ADAPTOR

- 1/4" Square Drive Adaptor - 50mm

1-13-649	L = 50 mm	X	1	3253561136474



## MAGNETIC BIT HOLDER

- 1/4" hex drive spindle will fit most chuck types Magnetic recess holds 1/4" insert bits securely in use

0-68-732	L = 60 mm	X	1	3253560687328
1-68-732	L = 60 mm	-	5 x 1	3253561687327
3-68-729	L = 75 mm	-	5 x 1	3253563687295



## MAGNETIC BIT HOLDER

- 1/4" Magnetic Bit-Holder

1-13-648	L = 50 mm	X	1	3253561136481



## MAGNETIC BIT HOLDER

- 1/4" Magnetic Bit-Holder - Copper -Beryllium Body

1-13-647	L = 50 mm	X	1	3253561136474



# BIT SETS



## BIT SET

- 6 Insert bits and a bit holder in a plastic storage box Precision machined for

perfect fit Forged and ground for long life and durability

STANLEY	i		☒	
1-68-735	5 pcs: Ph: 0, 1, 2 flared: 0.6 x 4.5, 1 x 5.5, 1.2 x 6.5 mm	X	1	3253561687358
1-68-737	6 pcs: Ph: 1, 2; Pz: 1, 2 flared: 0.8 x 5, 1.2 x 6.5 mm	X	1	3253561687372
1-68-738	6 pcs: Pz: 0, 1, 2 flared: 0.6 x 4.5, 1 x 5.5, 1.2 x 6.5 mm	X	1	3253561687389
1-68-739	6 pcs: Torx: T10, T15, T20, T25, T30, T40	X	1	3253561687396



## BIT SET

- 9 Insert bits and a bit holder in a plastic storage box Precision machined for

perfect fit Forged and ground for long life and durability

STANLEY	i		☒	
1-68-734	10 pcs: Ph: 1, 2, 3; Pz: 1, 2, 3; flared: 0.6 x 4.5; 1.0 x 5.5, 1.2 x 6.5 mm; + magnetic bit holder Phillips n°2. Pozidriv n°1, n°2, n°3.	X	20	3253561687341
1-68-724	Torx T10, T15, T20, T25, T30 + magnetic bit holder	X	20	3253561687242



## SET OF 19 PC 1/4" (25mm) DRIVE BITS

- Bit Sets+ 1 Magnetic Bit Holder

- Slotted: 4.5-5.5-6.5mm. Phillips: PH1-PH2. Pozidriv: PZ1-PZ2-PZ3-PZ4. Torx: T10-T15-T20-T25-T30-T40. Hexagonal: 3-4-5mm. Magnetic bit holder adaptor: 60mm

STANLEY	i		☒	
1-13-901	1/4"		1	3253561139017



## 200-PIECE BIT SET

- Selection of 190 insert bits and 10 bit holders Precision machined for perfect

fit Forged and ground for long life and durability

STANLEY	i		☒	
1-68-741	200 pcs: flared: 4.0 x 25 mm - 10 pcs; 5 x 25 mm - 10 pcs, 6.5 x 25 mm - 10 pcs; 8 x 25 mm - 10 pcs; Ph: 0 x 25 mm - 10 pcs, 1 x 25 mm - 15 pcs, 2 x 25 mm - 20 pcs; 3 x 25 mm - 10 pcs; double ended 1, 2 - 10 pcs; Pz: 0 x 25 mm - 10 pcs, 1 x 25 mm - 15 pcs	-	10	3253561687419





## SET OF 31 1/4" DRIVE BITS (25mm)

- Bit Set + 1 Magnetic Bit Holder with Lock-Ring
- Slotted: 4-4.5-5.5mm. Phillips: PH1-PH2-PH3. Pozidriv: PZ1-PZ2-PZ3. Torx: T10-T15-2xT20-2xT25-2xT27-2xT30-2xT40. Tamperproof Torx: T10-T15-T20-T25-T30. Hexagonal: 3-4-5-6mm. Bit holder adaptor: 50mm



1-13-903

1/4"

-

1

3253561139031



## SET OF 32 1/4" DRIVE BITS (25mm)

- Bit Set + 1 Magnetic Bit Holder with Lock-Ring
- Slotted: 4-5.5-6.5-8mm. Phillips: PH1-PH2-PH3. Pozidriv: PZ1-PZ2-PZ3. Hexagonal: 3-4-5-6mm. Torx: T8-T10-T15-T20-T25-T27-T30-T40. Tamperproof Torx: T10-T15-T20-T25-T27-T30-T40. Magnetic bit holder: 60mm. 1/4" mini ratchet



1-13-904

1/4"

-

1

3253561139048



## SET 2 OF 32 1/4" DRIVE BITS (25mm)

- Bit Sets + 1 Magnetic Bit Holder with Lock-Ring
- Slotted: 4.5-5.5-6.5-8mm. Phillips: PH1-PH2-PH3. Pozidriv: PZ1-PZ2-PZ3. Hexagonal: 3-4-5-6mm. Torx: T8-T10-T15-T20-T25-T27-T30-T40. Tamperproof Torx: T10-T15-T20-T25-T27-T30-T40. Magnetic bit holder: 60mm. 1/4" Square drive socket. 1/4" Adaptor



1-13-905

1/4"

-

1

3253561139055

# BIT SETS



## SET OF 40 1/4" DRIVE BITS (25mm)

- Bit Sets: 1 Magnetic Bit Holder with Lock-Ring + 1 ratchet
- Slotted: 4.5-5.5-6.5-8mm. Phillips: PH1-PH2-PH3. Pozidriv: PZ1-PZ2-PZ3. Hexagonal: 3-4-5-6mm. Torx: T8-T10-T15-T20-T25-T27-T30-T40. Tamperproof Torx: T10-T15-T20-T25-T27-T30-T40. 1/4" Sockets: 6-7-8-10-11-12-13mm. Magnetic bit holder: 60mm. 1/4" Mini ratchet. 1/4" Adaptor

STANLEY

i

☑

☒

|||||

1-13-906

1/4"

-

1

3253561139062



## SET 2 OF 40 1/4" DRIVE BITS (25mm)

- Bit Sets + 1 Magnetic Bit Holder with Lock-Ring + 1 ratcheting wrench
- Slotted: 4.5-5.5-6.5-8mm. Phillips: PH1-PH2-PH3. Pozidriv: PZ1-PZ2-PZ3. Hexagonal: 3-4-5-6mm. Torx: T8-T10-T15-T20-T25-T27-T30-T40. Tamperproof Torx: T10-T15-T20-T25-T27-T30-T40. 1/4" Bit: 6-7-8-10-11-12-13mm. Magnetic bit holder: 60mm. 1/4" Square drive socket. 1/4" Adaptor, 1/4" Square Drive Mini Ratchet

STANLEY

i

☑

☒

|||||

1-13-907

1/4"

-

1

3253561139079



## SET OF 61 PC 1/4" DRIVE BITS (25mm)

- Bit Sets + 1 Magnetic Bit-Holder with Lock-Ring
- Slotted: 4-4.5-5.5-6-6.5-8mm. Phillips: PH0-PH1-2xPH2-2xPH3-PH4. Pozidriv: PZ1-2xPZ2-2xPZ3-PH4. Torx: T10-T15-T20-T25-T27-T30. Tamperproof Torx: 3xT10-3xT15-6xT20-T25-T30-T40. Hexagonal: 2x3-4-5-3x6-8mm. Magnetic Bit Holder: 60mm

STANLEY

i

☑

☒

|||||

1-13-902

1/4"

-

1

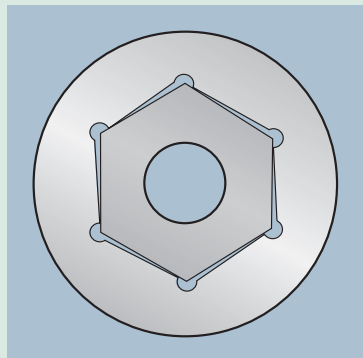
3253561139024



**ALAN'S ADVICE**

# HOW TO CHOOSE SPANNER OR WRENCH

## Sockets

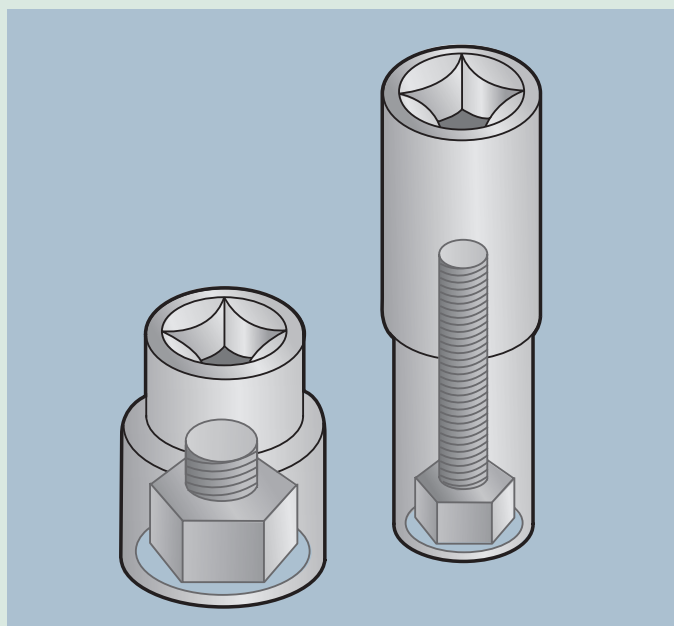


Sockets are available in either hex (6 points) or bi-hex (12 points). The bi-hex socket provides greater access when the nut is in a hard to reach position.

The hex socket, although with reduced angular accessibility, tends to be able to withstand heavier duty use.

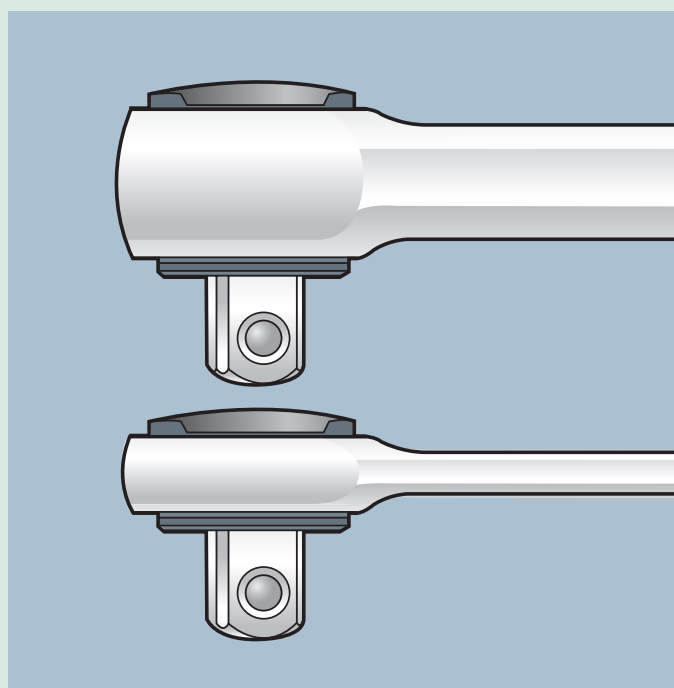
Maxi Drive profile sockets are the most efficient and offer protection to both the fastener and the socket wall by taking the driving force away from the extreme corners of the nut where there is the greatest risk of damage.

Sockets are available in standard length, for most general-purpose applications and deep drive, which come into their own if you need to tighten a nut on IO'ger screw studs.



## Ratchets

The turning force on the socket is imparted by the drive handle through a square recess forged into the end of the socket. The size of this recess varies depending on the size of the socket - 1/4" 3/8" or 1/2" square drive. Specific sets for each drive size are available, together with sets that combine drive sizes, which enable you



to deal with fastenings from 4mm up to 32 mm. Stanley MicroTough Ratchets offer the smoothest operation and allow access to fasteners in restricted areas. The pear shaped head is 20% -30% smaller than standard ratchet heads and the fine tooth mechanism offers a 5 angle of engagement.

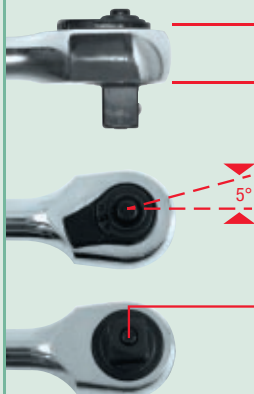
If your work regularly requires you to operate in areas with extremely poor access you should consider the Stanley indexable head ratchet, which allows the head to be free running or locked in 5 different positions. When working with oily hands it is important that the ratchet handle incorporates a quick socket release facility.

# SOCKET SETS & ACCESSORIES

The Stanley ranges of sockets and accessories are the result of some of the most advanced engineering and production processes in the world. Precision cold forged from Chrome Vanadium steel, they are highly resistant to wear and conform to ISO 2725 and DIN 3124 standards.

## TECHNOLOGY MicroTough™ FatMax®

Bi-material Handle Available  
in 1/4", 3/8" and 1/2"  
Complies with ISO standards



### REDUCED HEAD PROFILE

30% smaller than the standard pawl

### 5° ARC SWING

With fine gearing

### 72-TOOTH PAWL

Maximum precision every time

### QUICK HEAD EJECTION SYSTEM

Elimination of risk

## MicroTough™ RATCHET

- 1/4" square drive
- Compliant with ISO standards
- DynaGrip bi-material handle for comfortable grip
- Fully polished chrome plated finish for durability and rust resistance
- Socket locking system
- Fine tooth ratchet gives 5° angle of engagement
- 20-30% smaller pear shaped head, smaller than conventional ratchets for easy access in tight spaces

STANLEY	i		☒	
4-85-576	143 mm, 1/4"	X	10	3253564855761
4-85-577	208 mm, 3/8"	X	10	3253564855778
4-85-578	254 mm, 1/2"	X	5	3253564855785

## RATCHETS

- Ratchet - Pear Head - Bi-Material Handle
- 5° increments
- Matt chrome plated finish
- Conforms to ISO 3315 and DIN 3122 standards

STANLEY	i		☒	
1-13-770	1/4" – 165 mm	-	10	3253561137709
1-13-848	3/8" – 210 mm	-	10	3253561138485
1-13-708	1/2" – 250 mm	-	5	3253561137082

## QUICK RELEASE RATCHET

- Round head ratchet for tight access area
- Rotates left or right for direction Fully polished chrome plated finish for durability and rust resistance
- Quick release push button provide extra safety and handy operation
- Comfortable and durable moulded handle withstands most industrial solvents

STANLEY	i		☒	
1-86-395	160 mm, 1/4"	-	4	3253561863950
4-86-395	160 mm, 1/4"	X	1	3253564863957
1-86-396	220 mm, 3/8"	-	4	3253561863967
4-86-396	220 mm, 3/8"	X	10	3253564863964
1-86-397	265 mm, 1/2"	-	4	3253561863974
4-86-397	265 mm, 1/2"	X	5	3253564863971



# RATCHETS AND ACCESSORIES



## 3/4" REVERSIBLE RATCHET WITH HANDLE

- Increments 5°
- High torque resistance
- Matt chrome plated finish
- Conforms to ISO 3316 and DIN 3123 standards



1-13-819

3/4"

-

1

3253561138195



## 3/4" REVERSIBLE RATCHET WITHOUT HANDLE

- Increments 5°
- High torque resistance
- Matt chrome plated finish
- Conforms to ISO 3315 and DIN 3122 standards



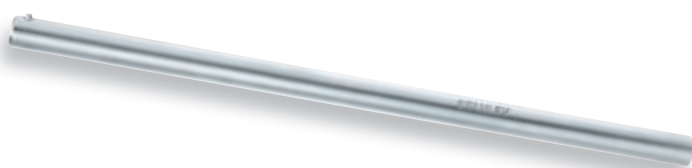
1-13-817

3/4"

-

1

3253561138171



## 3/4" BAR HANDLE

- Matt chrome plated finish
- Conforms to ISO 3315 and DIN 3122 standards



1-13-816

3/4" x 450 mm

-

1

3253561138164



## 3/4" HANDLE FOR RATCHET

- High torque resistance
- Matt chrome plated finish
- Conforms to ISO 3315 and DIN 3122 standards
- Manual use



1-13-818

3/4" x 450 mm

-

1

3253561138188



**NEW  
PRODUCT**

## AUTOMATIC RESET WRENCH WITH RATCHET

- Accuracy: +/- 4%
- Proven reliability
- Touch and sound signals on reaching preset torque
- Automatic reset
- Suitable for use with sockets
- Conforms to ISO 6789 standard



1-13-568

5 - 25 Nm

-

1

3253561135682

1-13-565

10 - 50 Nm

-

1

3253561135651

1-13-571

40 - 200 Nm

-

1

3253561135712

1-13-572

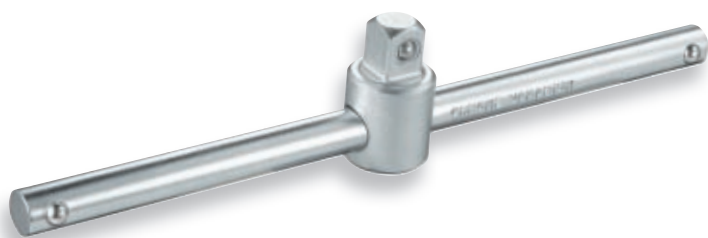
1/2" 70 -> 350 Nm

-

1

3253561135729

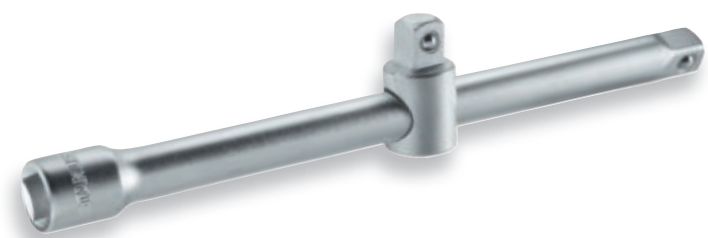
# ACCESSORIES



## SLIDING TEE

- High torque resistance
- Chrome vanadium steel
- The head is lockable on the sliding rod
- Matt chrome plated finish
- Conforms to ISO 3315 and DIN 3122 standards

STANLEY	i			
1-17-355	1/4" – 108 mm	-	1	3253561173554
1-17-361	3/8" – 250 mm	-	1	3253561173615



## DRIVE SLIDING TEE

- Suited to T or L configurations
- High torque resistance
- Chrome vanadium steel

STANLEY	i			
1-17-259	1/2" – 243 mm	-	1	3253561172595
1-13-815	3/4" – 432 mm	-	1	3253561138157



## ARTICULATED HANDLE

- Chrome vanadium steel
- Fully polished chrome plated finish for durability and rust resistance
- Knurled handle

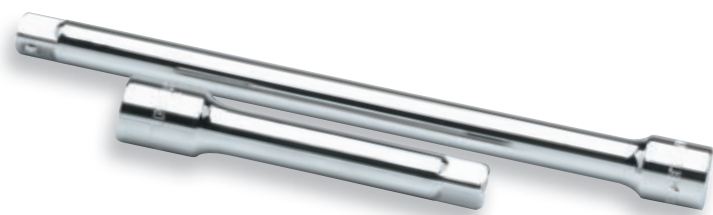
STANLEY	i			
1-86-012	147 mm, 1/4"	-	6	3253561860126
1-86-213	215,5 mm; 3/8"	-	6	3253561862137
1-86-415	375 mm, 1/2"	-	4	3253561864155
1-86-413	425 mm, 1/2"	-	4	3253561864131
4-86-413	425 mm, 1/2"	X	1	3253564864138



## 1/4" FLEXIBLE EXTENSION

- Chrome vanadium steel
- Fully polished chrome plated finish for durability and rust resistance
- Easy access in tight spaces

STANLEY	i			
1-86-001	150 mm	-	6	3253561860010



## EXTENSION BAR

- Chrome vanadium steel
- Fully polished chrome plated finish for durability and rust resistance

STANLEY	i			
1-86-207	150 mm, 3/8"	-	6	3253561862076
4-86-407	125 mm, 1/2"	X	10	3253564864077
4-86-408	250 mm, 1/2"	X	10	3253564864084

## EXTENTIONS

- High torque resistance
- Chrome vanadium steel
- Matt chrome plated finish
- Conforms to ISO 3316 and DIN 3123 standards



STANLEY	i			
1-13-771	1/4" – 55 mm	-	10	3253561137716
1-17-356	1/4" – 100 mm	-	10	3253561173561
1-13-772	1/4" – 150 mm	-	10	3253561137723
1-17-363	3/8" – 75 mm	-	5	3253561173639
1-13-850	3/8" – 125 mm	-	10	3253561138508
1-17-364	3/8" – 250 mm	-	10	3253561173646
1-13-710	1/2" – 75 mm	-	5	3253561137105
1-17-260	1/2" – 130 mm	-	5	3253561172601
1-17-261	1/2" – 420 mm	-	5	3253561172618
1-13-820	3/4" – 100 mm	-	3	3253561138201
1-13-823	3/4" – 200 mm	-	3	3253561138232
1-13-824	3/4" – 400 mm	-	3	3253561138249

**FatMax**



## SHORT SPINNER 158mm

- Ergonomic
- High strength bi-material handle
- Resistant to common chemicals
- Matt chrome plated finish
- Conforms to ISO 3315 and DIN 3122 standards

STANLEY	i			
1-13-910	158 mm x 1/4"	-	6	3253561139109



## 1/2" CARDAN JOINT

- 24.9mm x 68.5mm (L) - 1/2"
- Chrome vanadium steel
- Fully polished chrome plated finish for durability and rust resistance

STANLEY	i			
4-86-411	68,5 mm	X	20	3253564864114



## UNIVERSAL JOINT

- Manual use
- Matt chrome plated finish
- Conforms to ISO 3316 and DIN 3123 standards

STANLEY	i			
1-17-360	1/4" – 25 mm	-	10	3253561173608
1-17-367	3/8" – 47 mm	-	10	3253561173677
1-17-264	1/2" – 68,5 mm	-	10	3253561172649
1-13-822	3/4" – 105 mm	-	10	3253561138225





## COUPLER

- Manual use
- Matt chrome plated finish
- Conforms to ISO 3316 and DIN 3123 standards

STANLEY	i			
1-17-358	1/4" F – 3/8" M	-	10	3253561173585
1-17-366	3/8" F – 1/2" M	-	10	3253561173660
1-17-365	3/8" M – 1/4" F	-	10	3253561173653
1-17-263	1/2" F – 3/4" M	-	10	3253561172632
1-17-262	1/2" F – 3/8" M	-	10	3253561172625
1-13-821	3/4" F – 1/2" M	-	10	3253561138218



## 1/2" FEMALE X 3/8" MALE ADAPTER

- Chrome vanadium steel
- Fully polished chrome plated finish for durability and rust resistance

STANLEY	i			
4-86-414	34,5 mm	X	20	3253564864145



## 1/4" TIP-CARRIER 3/8" SOCKET

- Chrome vanadium steel
- Fully polished chrome plated finish for durability and rust resistance
- Knurled handle

STANLEY	i			
1-86-250	27,0 mm	-	6	3253561862502



## HOLDER FOR BITS

- Chrome vanadium steel
- For manual use
- Matt chrome finish

STANLEY	i			
1-13-851	3/8" holder for bits 1/4"	-	10	3253561138515
1-13-711	1/2" holder for bits 5/16"	-	10	3253561137112
1-86-124	1/4" holder for bits 1/4"	-	6	3253561861246



## 1/4" 6-POINT METRIC SOCKET

- High torque resistance
- Chrome vanadium steel
- More powerful tightening & longer life
- Maxi-Drive profile: torque transmission through fastener flats instead of corners
- Matt chrome plated finish
- Conforms to ISO 2725-1 and DIN 3124 standards
- Manual use

STANLEY	i			
1-17-293	4 mm	-	10	3253561172939
1-17-294	5 mm	-	10	3253561172946
1-17-295	5,5 mm	-	10	3253561172953
1-17-296	6 mm	-	10	3253561172960
1-17-297	7 mm	-	10	3253561172977
1-17-298	8 mm	-	10	3253561172984
1-17-299	9 mm	-	10	3253561172991
1-17-350	10 mm	-	10	3253561173509
1-17-351	11 mm	-	10	3253561173516
1-17-352	12 mm	-	10	3253561173523
1-17-353	13 mm	-	10	3253561173530
1-17-354	14 mm	-	10	3253561173547



## 1/4" 6-POINT METRIC SOCKET - LONG

- High torque resistant
- Chrome vanadium steel
- More powerful tightening & longer life
- Maxi-Drive profile: torque transmission through fastener flats instead of corners
- Finish: Matt chrome plated
- Conforms to ISO 2725-1 and DIN 3124 standards
- Manual use

STANLEY	i			
1-13-751	4 mm	-	10	3253561137518
1-13-752	5 mm	-	10	3253561137525
1-13-753	5,5 mm	-	10	3253561137532
1-13-754	6 mm	-	10	3253561137549
1-13-755	7 mm	-	10	3253561137556
1-13-756	8 mm	-	10	3253561137563
1-13-757	9 mm	-	10	3253561137570
1-13-758	10 mm	-	10	3253561137587
1-13-759	11 mm	-	10	3253561137594
1-13-760	12 mm	-	10	3253561137600
1-13-761	13 mm	-	10	3253561137617
1-13-762	14 mm	-	10	3253561137624



## 3/8" 12-POINT METRIC SOCKET

- High torque resistance
- Chrome vanadium steel
- More powerful tightening & longer life
- Maxi-Drive profile: torque transmission through fastener flats instead of corners
- Matt chrome plated finish
- Conforms to ISO 2725-1 and DIN 3124 standards
- Manual use

STANLEY	i			
1-13-830	7 mm	-	10	3253561138300
1-13-831	8 mm	-	10	3253561138317
1-13-832	9 mm	-	10	3253561138324
1-13-833	10 mm	-	10	3253561138331
1-13-834	11 mm	-	10	3253561138348
1-13-835	12 mm	-	10	3253561138355
1-13-836	13 mm	-	10	3253561138362
1-13-837	14 mm	-	10	3253561138379
1-13-838	15 mm	-	10	3253561138386
1-13-839	16 mm	-	10	3253561138393
1-13-840	17 mm	-	10	3253561138409
1-13-841	18 mm	-	10	3253561138416
1-13-842	19 mm	-	10	3253561138423
1-13-843	20 mm	-	10	3253561138430
1-13-844	21 mm	-	10	3253561138447
1-13-845	22 mm	-	10	3253561138454
1-13-846	23 mm	-	10	3253561138461
1-13-847	24 mm	-	10	3253561138478

# SOCKETS



## 1/2" 6-POINT METRIC SOCKET

- High torque resistance
- Chrome vanadium steel
- More powerful tightening & longer life
- Maxi-Drive profile: torque transmission through fastener flats instead of corners
- Matt chrome plated finish
- Conforms to ISO 2725-1 and DIN 3124 standards
- Manual use

STANLEY	i		☒	
1-17-086	8 mm	-	10	3253561137099
1-17-087	9 mm	-	10	3253561137129
1-17-088	10 mm	-	10	3253561170881
1-17-089	11 mm	-	10	3253561170898
1-17-090	12 mm	-	10	3253561170904
1-17-091	13 mm	-	10	3253561170911
1-17-092	14 mm	-	10	3253561170928
1-17-093	15 mm	-	10	3253561170935

STANLEY	i		☒	
1-17-094	16 mm	-	10	3253561170942
1-17-095	17 mm	-	10	3253561170959
1-17-096	18 mm	-	10	3253561170966
1-17-097	19 mm	-	10	3253561170973
1-17-098	20 mm	-	10	3253561170980
1-17-099	21 mm	-	10	3253561170997
1-17-250	22 mm	-	10	3253561172502
1-17-251	23 mm	-	10	3253561172519
1-17-252	24 mm	-	10	3253561172526
1-17-253	26 mm	-	1	3253561172533
1-17-254	27 mm	-	1	3253561172540
1-17-255	28 mm	-	1	3253561172557
1-17-256	29 mm	-	1	3253561172564
1-17-257	30 mm	-	1	3253561172571
1-17-258	32 mm	-	1	3253561172588



## 1/2" DRIVE 6-POINT SPARK PLUG SOCKET

- Chrome Vanadium sockets with 'rubber' insert to hold and protect spark plug from accidental damage

STANLEY	i		☒	
4-88-993	16 mm	X	10	3253564889933
4-88-996	21 mm	X	10	3253564889964



## 1/2" 6-POINT SOCKET - LONG

- High torque resistance
- Chrome vanadium steel
- More powerful tightening & longer life
- Maxi-Drive profile: torque transmission through fastener flats instead of corners
- To enable access to fastener with a projecting threaded stud
- Manual use
- ISO 2725-1 and DIN 3124 compliant

STANLEY	i		☒	
1-17-265	12 mm	-	10	3253561172656
1-17-266	13 mm	-	10	3253561172663
1-17-267	14 mm	-	10	3253561172670
1-17-268	15 mm	-	10	3253561172687
1-17-269	16 mm	-	10	3253561172694
1-17-270	17 mm	-	10	3253561172700
1-17-271	18 mm	-	10	3253561172717
1-17-272	19 mm	-	10	3253561172724
1-17-273	21 mm	-	5	3253561172731
1-17-274	22 mm	-	5	3253561172748
1-17-275	24 mm	-	5	3253561172755
1-17-276	27 mm	-	5	3253561172762
1-17-277	30 mm	-	5	3253561172779



STANLEY	i		☒	
1-17-051	8 mm	-	10	3253561170515
1-17-052	9 mm	-	10	3253561170522
1-17-053	10 mm	-	10	3253561170539
1-17-054	11 mm	-	10	3253561170546
1-17-055	12 mm	-	10	3253561170553
1-17-056	13 mm	-	10	3253561170560
1-17-057	14 mm	-	10	3253561170577
1-17-058	15 mm	-	10	3253561170584
1-17-059	16 mm	-	10	3253561170591
1-17-060	17 mm	-	10	3253561170607

## 1/2" 12-POINT METRIC SOCKET

- High torque resistance
- Chrome vanadium steel
- More powerful tightening & longer life
- Maxi-Drive profile: torque transmission through fastener flats instead of corners
- Matt chrome plated finish
- Conforms to ISO 2725-1 and DIN 3124 standards
- Manual use

STANLEY	i		☒	
1-17-061	18 mm	-	10	3253561170614
1-17-062	19 mm	-	10	3253561170621
1-17-063	20 mm	-	10	3253561170638
1-17-064	21 mm	-	10	3253561170645
1-17-065	22 mm	-	10	3253561170652
1-17-066	23 mm	-	10	3253561170669
1-17-067	24 mm	-	10	3253561170676
1-17-068	26 mm	-	5	3253561170683
1-17-069	27 mm	-	5	3253561170690
1-17-070	28 mm	-	5	3253561170706
1-17-071	29 mm	-	5	3253561170713
1-17-072	30 mm	-	5	3253561170720
1-17-073	32 mm	-	5	3253561170737



STANLEY	i		☒	
1-17-278	12 mm	-	10	3253561172786
1-17-279	13 mm	-	10	3253561172793

## 1/2" 12-POINT METRIC SOCKET - LONG

- High torque resistance
- Chrome vanadium steel
- More powerful tightening & longer life
- Maxi-Drive profile: torque transmission through fastener flats instead of corners
- To enable access to fastener with a projecting threaded stud
- Manual use
- ISO 2725-1 and DIN 3124 compliant

STANLEY	i		☒	
1-17-280	14 mm	-	10	3253561172809
1-17-281	15 mm	-	10	3253561172816
1-17-282	16 mm	-	10	3253561172823
1-17-283	17 mm	-	10	3253561172830
1-17-284	18 mm	-	10	3253561172847
1-17-285	19 mm	-	10	3253561172854
1-17-286	21 mm	-	5	3253561172861
1-17-287	22 mm	-	5	3253561172878
1-17-288	23 mm	-	5	3253561172885
1-17-289	24 mm	-	5	3253561172892
1-17-290	27 mm	-	5	3253561172908
1-17-291	30 mm	-	5	3253561172915
1-17-292	32 mm	-	5	3253561172922



STANLEY	i		☒	
4-86-541	9 mm	X	20	3253564865418
4-86-542	10 mm	X	20	3253564865425
4-86-543	11 mm	X	20	3253564865432
4-86-544	12 mm	X	20	3253564865449
4-86-545	13 mm	X	20	3253564865456
4-86-546	14 mm	X	20	3253564865463
4-86-547	15 mm	X	20	3253564865470

## 1/2" DRIVE 12-POINT STANDARD SOCKET

- 12 point bi-hex recess with Maxi Drive face profile to improve grip on fastener and reduce risk of damage
- Conforms to ISO 2725 and DIN 3124 standards






STANLEY	i		☒	
4-88-789	17 mm	X	20	3253564887892
4-88-790	18 mm	X	20	3253564887908
4-88-791	19 mm	X	20	3253564887915
4-88-792	20 mm	X	10	3253564887922
4-88-793	21 mm	X	10	3253564887939
4-88-794	22 mm	X	10	3253564887946
4-88-795	23 mm	X	10	3253564887953
4-88-796	24 mm	X	10	3253564887960
4-88-797	25 mm	X	10	3253564887977
4-88-798	26 mm	X	10	3253564887984
4-88-799	27 mm	X	10	3253564887991
4-88-800	28 mm	X	10	3253564888004
4-88-801	29 mm	X	10	3253564888011
4-88-802	30 mm	X	10	3253564888028
4-88-803	32 mm	X	10	3253564888035

# SOCKETS



## 1/2" DRIVE 12-POINT DEEP SOCKET






- Cold Forged chrome vanadium steel sockets for strength and resistance to wear
- 12 point bi-hex recess with Maxi Drive face profile to improve grip on fastener and reduce risk of damage
- Deep sockets to enable access to fastener with a projecting threaded stud
- Conforms to ISO 2725 and DIN 3124 standards

				
1-86-418	10 mm	-	6	3253561864186
1-86-419	11 mm	-	6	3253561864193
1-86-420	12 mm	-	6	3253561864209
1-86-421	13 mm	-	6	3253561864216
1-86-422	14 mm	-	6	3253561864223
1-86-423	15 mm	-	6	3253561864230
1-86-424	16 mm	-	6	3253561864247
1-86-425	17 mm	-	6	3253561864254
1-86-426	18 mm	-	6	3253561864261
1-86-427	19 mm	-	6	3253561864278
1-86-429	21 mm	-	4	3253561864292
1-86-430	22 mm	-	4	3253561864308
1-86-432	24 mm	-	4	3253561864322
1-86-435	27 mm	-	4	3253561864353
1-86-438	30 mm	-	2	3253561864384
1-86-439	32 mm	-	2	3253561864391

## 3/4" 6-POINT METRIC SOCKET

- High torque resistance
- Chrome vanadium steel
- More powerful tightening & longer life
- Maxi-Drive profile: torque transmission through fastener flats instead of corners
- Matt chrome plated finish
- Conforms to ISO 2725-1 and DIN 3124 standards
- Manual use



				
1-13-790	19 mm	-	4	3253561137907
1-13-791	21 mm	-	4	3253561137914
1-13-792	22 mm	-	4	3253561137921
1-13-793	23 mm	-	4	3253561137938
1-13-794	24 mm	-	4	3253561137945
1-13-795	26 mm	-	4	3253561137952
1-13-796	27 mm	-	4	3253561137969
1-13-797	28 mm	-	4	3253561137976
1-13-798	29 mm	-	4	3253561137983
1-13-799	30 mm	-	4	3253561137990
1-13-800	32 mm	-	4	3253561138003
1-13-801	33 mm	-	2	3253561138010
1-13-802	34 mm	-	2	3253561138027
1-13-803	35 mm	-	2	3253561138034
1-13-804	36 mm	-	2	3253561138041
1-13-805	38 mm	-	2	3253561138058
1-13-806	40 mm	-	2	3253561138065
1-13-807	41 mm	-	2	3253561138072
1-13-808	42 mm	-	2	3253561138089
1-13-809	44 mm	-	2	3253561138096
1-13-810	46 mm	-	2	3253561138102
1-13-811	50 mm	-	2	3253561138119
1-13-812	54 mm	-	2	3253561138126
1-13-813	55 mm	-	2	3253561138133