



Hammers

109



Demolition Tools

119



Cold Chisels

121



Surform

124



Hand file

129



**Plasterboard
Tools**

131

CONSTRUCTION TOOLS

STANLEY

HAMMERS

Stanley has applied science and modern technology to create a patented revolutionary tubing fork handle design that virtually eliminates all vibration and prevents the risk of repetitive strain injuries.

FatMax^{XL}

ANTIVIBE™

One piece forged head and shaft exceptional strength

– Langer strike zone

Unique shock absorption system integrally molded on polyurethane grip shaped and textured for comfort and non-slip performance.

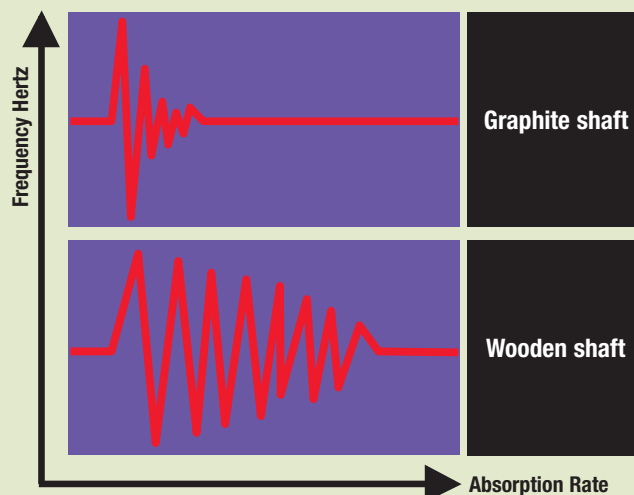


1. Hardened and tempered face with rim tempered edge for safety.
2. Hardened and oil quenched nail pulling claw for toughness and strength to resist levering forces.
3. Visually attractive and branded forged shaft and head.
4. Practical, flexible handle with polyurethane coating for optimum grip and perfect balance.
5. Exclusive "Tuning fork" shock absorption system



GRAPHITE

Shock absorption capacity 5 x greater than traditional wooden hammer



COMPO-CAST®

„DEAD BLOW” ACTION

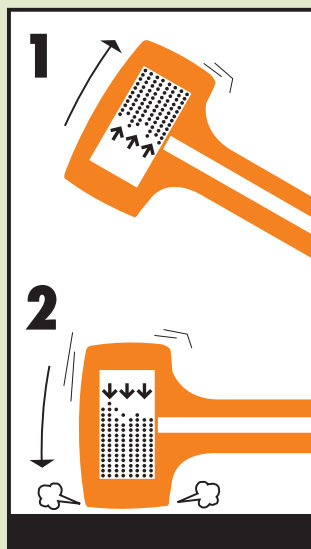
The movement of small steel ball bearings within the head of the hammer stop the rebound generated by a traditional hammer strike.

ANTI-CHIPPING

The steel head and shaft are completely over-moulded with a thick layer of urethane, which prevents damage to the work piece and the striking face.

ANTI-SPARK

No metallic parts are exposed, which means that these hammers can be used in environments where a spark may cause an explosion.



STRENGTH AND PRECISION

When the head strikes, the ball bearings move forward increasing the strike force but at the same time eliminating rebound ensuring total control and safety.

FatMax[®] XL[™]

FatMax[®] XL[™] AVX CURVE CLAW HAMMERS



New soft grip reduces fatigue and allows for multiple holding positions

Anti slip rubber grip with patented diamond pattern texture increases comfort and performance

STANLEY	i		✕	
1-51-162	456 g, curve	-	4	3253561511622
1-51-164	570 g, curve	-	4	3253561511646
1-51-163	456 g, rip	-	4	3253561511639
1-51-165	570 g, rip	-	4	3253561511653
1-51-177	627 g, rip long	-	2	3253561511776

Patented tuning fork design plus torque stabilizing bars to reduce shock and vibration



One piece solid forged head for larger sweet spot and better balance
magnetic nail starters for hands free use

FatMax[®]

1-PIECE FatMax[®] ANTIVIBE HAMMER

One piece solid forged head and shaft for maximum strength and balance

Anti-glare heat treatment in the hit zone for solidity and safety



Soft touch handle provides a comfortable slip resistant grip even with wet hands

Patented tuning fork design reduces harmful vibration being transmitted to the arm



Ergonomic handle requires less strength, reduces the risk of muscular injuries

STANLEY	i		✕	
1-51-941	450 g, curve	-	4	3253561519413
1-51-943	570 g, curve	-	4	3253561519437
1-51-942	456 g, rip	-	4	3253561519420
1-51-944	570 g, rip	-	4	3253561519444
1-51-937	600 g, Latthammer	-	4	3253561519376

HAMMERS

FatMax

FatMax® ANTIVIBE™ BLACKSMITH HAMMER



- Ergonomically designed handle with Thermo-Plastic rubber grip for increased comfort and performance
- Faces and edges are ground and polished
- One piece, forged steel head and handle for superior durability

- Cross-pein is used for shaping and bending metal
- Striking-face is crowned and chamfered for increased safety

STANLEY



1-56-003

900 g

-

4

3253561560033

FatMax

FatMax® ANTIVIBE™ BALL PEIN HAMMER



- Patented Anti-Vibe™ technology reduces vibration transmitted to wrist and elbow
- One-piece forged construction for strength and durability

- Top of the hammer head is machined flat to allow it to stand upright on the shop floor or work bench
- Rim temper reduces likelihood of chipping when striking metal objects

STANLEY



1-54-144

250 g

-

6

3253561541445

1-54-145

375 g

-

6

3253561541452

1-54-146

500 g

-

6

3253561541469

1-54-147

750 g

-

6

3253561541476

1-54-148

1000 g

-

6

3253561541483

FatMax

FatMax® ANTIVIBE™ DRILLING HAMMER



- Club hammer for use in confined spaces with little room for full arc swing
- Patented Anti-Vibe™ technology reduces vibration transmitted to wrist and elbow
- Ergonomically designed handle with Thermo-Plastic rubber grip

- One-piece forged construction for strength and durability
- Applications include striking chisels, punches, and star-drills and many industrial applications

STANLEY



1-56-001

1360 g

-

4

3253561560019

FatMax



FatMax® ANTIVIBE™ ENGINEERING HAMMER

- Sledge hammer for striking wood, metal, concrete or stone
- Patented Anti-Vibe™ technology reduces vibration transmitted to wrist and elbow
- Ergonomically designed handle with Thermo-Plastic rubber grip
- One piece, forged steel head and handle for superior durability



1-56-004

1360 g

-

4

3253561560040

FatMax



FatMax® ANTIVIBE™ DRYWALL HAMMER

- Specially designed for the installation of drywall/plasterboard
- Patented Anti-Vibe™ technology reduces vibration transmitted to wrist and elbow
- One piece, forged steel head and handle for superior durability
- Special blade-edge ideal for removing old material and marking cut-outs required for electrical outlets
- Offset striking face to facilitate overhead working



1-54-015

400 g

-

4

3253561540158

FatMax



FatMax® ANTIVIBE™ BRICK HAMMER

- Cutting hammer for cutting brick, masonry tile, and concrete block
- Patented Anti-Vibe™ technology reduces vibration transmitted to wrist and elbow
- One piece, forged steel head and handle for superior durability
- Blade has a hardened cutting edge designed to score materials before striking for an even cut
- Flat striking face with chambered edges



1-54-022

570 g

-

4

3253561540226

FatMax



FatMax® ANTIVIBE™ CARPENTER'S HATCHET

- Dual function hammer for cutting wood and/or driving stakes or un-hardened nails
- Suitable for wide variety of trades including carpentry, framing and roofing
- Patented Anti-Vibe™ technology reduces vibration transmitted to wrist and elbow
- One-piece forged construction for strength and durability
- Used by tradesmen, to include carpenter's framer's and roofer's



1-54-023

800 g

-

4

3253561540233

HAMMERS



**NEW
PRODUCT**

GRAPHITE CLAW HAMMER

- 5 times fewer vibrations than a wooden handle
- Flat head and sharp angles
- Handle cannot be removed thanks to its exclusive unbreakable head-handle link
- Superior shock resistance compared with traditional handle materials
- Vibration dampener through the combination of a flexible elastomer coating and a graphite core
- Comfortable slip resistant grip
- Fully heat treated and rim tempered striking face for strength and safety
- Full length graphite core shaft for maximum strength and balance

STANLEY	i		☒	
1-51-505	450 g	-	4	3253561515057
1-51-507	540 g	-	4	3253561515071



LATTHAMMER GRAPHITE

- DynaGrip ergonomic handle for a comfortable, no-slip hand grip, even with damp hands - reduces the risk of sprains
- Flat head and cut angles for increased resistance
- Anti-glare heat treatment in the hit zone for solidity and safety
- Higher damping capacity compared to a traditional handle
- Unbreakable graphite sleeve with patented attachment system - for maximum strength, vibration damping and safety

STANLEY	i		☒	
1-51-136	600 g - Smooth Latthamer	-	6	3253561511363
1-51-137	600 g - Latthamer	-	6	3253561511370



LOCKSMITH'S HAMMERS GRAPHITE

- Slightly bulging head and centred pane
- 5 times fewer vibrations than a wooden handle
- Vibration dampener through the combination of a flexible elastomer coating
- Handle reinforced by a graphite core - very good handling and excellent balance
- New GRAPHITE handle - cannot be removed thanks to its exclusive unbreakable head-handle link
- Can be used as a riveting hammer or carpenter's hammer

STANLEY	i		☒	
1-54-910	200 g	-	6	3253561549106
1-54-911	300 g	-	6	3253561549113
1-54-912	500 g	-	6	3253561549120
1-54-913	800 g	-	4	3253561549137
1-54-914	1000 g	-	4	3253561549144



LOCKSMITH'S HAMMERS BI-MATERIAL

- Slightly bulging head and centred pane
- Ergonomic flexible elastomer sheath
- Handle cannot be removed due to a combination of notched sockets and epoxy binding
- Resistant to chemical agents and differences in temperature
- Bi-material polyolefine anti-vibration unbreakable handle
- Can be used as a riveting hammer or carpenter's hammer

STANLEY	i		☒	
1-54-684	200 g	-	4	3253561546846
1-54-685	300 g	-	4	3253561546853
1-54-686	500 g	-	4	3253561546860
1-54-687	800 g	-	4	3253561546877
1-54-688	1000 g	-	2	3253561546884



BI-MATERIAL ELECTRICIAN'S HAMMERS

- Bi-material polyolefine anti-vibration unbreakable handle
- Resistant to chemical agents and differences in temperature
- Flexible elastomer sheath
- Flat head and very extended pane
- For driving in nails and pegs in locations that are difficult to access

STANLEY	i		☒	
1-54-695	200 g	-	4	3253561546952



TWO-HANDED HAMMERS BI-MATERIAL HANDLE - SHARP ANGLES

- Bi-material polyolefine anti-vibration unbreakable handle
- Resistant to chemical agents and differences in temperature
- Ergonomic flexible elastomer sheath
- Flat head and sharp angles
- Generally used with an intermediate tool: pin, cold chisel, bricklayer's chisel, etc.

STANLEY	i		☒	
1-56-361	1000 g	-	1	3253561563614
1-56-362	1250 g	-	1	3253561563621
1-56-363	1500 g	-	2	3253561563638



TWO-HANDED HAMMERS BI-MATERIAL HANDLE - ROUNDED ANGLES

- Flat head and low angles to increase safety
- Ergonomic flexible elastomer sheath
- Handle cannot be removed due to a combination of notched sockets and epoxy binding
- Resistant to chemical agents and differences in temperature
- Bi-material polyolefine anti-vibration unbreakable handle

STANLEY	i		☒	
1-56-364	800 g	-	2	3253561563645
1-56-365	1000 g	-	2	3253561563652
1-56-366	1250 g	-	2	3253561563669
1-56-367	1500 g	-	2	3253561563676

HAMMERS



BLUE STRIKE CLAW HAMMER

- Flock filled vinyl grip, impervious to oil and most solvents
- Tubular oval shaft combines strength with a lightweight feel
- Fully forged and heat treated head for strength and performance

STANLEY	i			
1-51-488	450 g	-	6	3253561514883
1-51-489	570 g	-	6	3253561514890



STEELMASTER CLAW HAMMER

- Anti-glare heat treatment in the hit zone for solidity and safety
- Seamless, oval, tubular steel shaft for strength and balance
- 5 ton force fit head to handle assembly for improved safety
- Soft grip ergonomic handle for comfort and grip
- Fully heat treated carbon steel head for strength, durability and safety

STANLEY	i			
1-51-031	450 g	-	4	5000366510316
1-51-033	570 g	-	4	5000366510330



CARPENTER'S MAGNETIC HEAD CLAW HAMMER

- Compliant with DIN 7239
- Magnetic head
- Chrome plated tubular handle and moulded anatomical handle
- Single point to fix the hammer in the woodwork and to release the hands
- Nail pulling shape and nail positioning holder
- Squared flat head

STANLEY	i			
1-51-037	600 g	-	6	3253561510373



STEELMASTER CLAW HAMMER

- Anti-glare heat treatment in the hit zone for solidity and safety
- Seamless, oval, tubular steel shaft for strength and balance
- 5 ton force fit head to handle assembly for improved safety
- Soft grip ergonomic handle for comfort and grip
- Fully heat treated carbon steel head for strength, durability and safety

STANLEY	i			
1-51-039	500 g	-	6	3253561510397



LOCKSMITH'S HAMMERS DIN 1041

- Centred pane
- Wooden handle
- Can be used as a riveting hammer or carpenter's hammer

STANLEY	i			
1-51-171	100 g	-	4	3253561511714
1-51-172	200 g	-	4	3253561511721
1-51-173	300 g	-	4	3253561511738
1-51-174	400 g	-	4	3253561511745
1-51-175	500 g	-	4	3253561511752
1-51-178	800 g	-	2	3253561511783
1-51-180	1000 g	-		
1-51-182	1500 g	-		



WOODEN HANDLE ELECTRICIAN'S HAMMER

- Wooden handle, very extended pane
- Ideal for driving in nails and pegs in locations that are difficult to access

STANLEY	i			
1-54-697	200 g	-	4	3253561546976



LUMP HAMMER

- Unbreakable due to a permanent attachment of the sleeve to the head using an epoxy resin – for better safety
- Flat head and cut angles for improved resistance
- Tempered steel head for longevity
- Ash wood handle for longevity and balance

STANLEY	i			
1-54-051	1000 g	-	2	3253561540516
1-54-052	1250 g	-	2	3253561540523
1-54-053	1500 g	-	2	3253561540530



RUBBER MALLETS

- Rubber head moulded to shore 85 to 90 hardness
- Wooden handle, conical handle setting
- For all mechanical work

STANLEY	i			
1-57-050	ø 55 mm	-	2	3253561570506
1-57-051	ø 65 mm	-	2	3253561570513

HAMMERS, AXES



GLAZER'S HAMMER

- Bevelled handle
- Claw pane
- Flat head

STANLEY

i

☰

☒

|||||

1-54-730

14 mm

-

2

3253561547300



COMPO-CAST® STANDARD HEAD SOFT FACE HAMMERS

- Steel reinforced handles provide added strength and safety, resist breaking on overstrike
- Soft face doesn't mar surfaces or equipment
- Urethane allows the pane to resume its shape after the shock
- Compo-Cast® does not damage items thanks to its construction in overmoulded urethane

STANLEY

i

☰

☒

|||||

1-57-530

38 x 225 mm / 283 g

-

4

3253561575303

1-57-531

44 x 280 mm / 510 g

-

4

3253561575310

1-57-532

51 x 325 mm / 600 g

-

4

3253561575327

1-57-533

64 x 355 mm / 1180 g

-

4

3253561575334

1-57-534

70 x 405 mm / 1479 g

-

2

3253561575341



COMPO-CAST® SLEDGEHAMMER

- Urethane allows the pane to resume its shape after the shock
- COMPOCAST does not damage items thanks to its construction in overmoulded urethane
- Anti-rebound thanks to hundreds of steel balls which move inside the head and absorb the energy following the shock

STANLEY

i

☰

☒

|||||

1-57-550

70 x 510 mm / 2260 g

-

2

3253561575501

1-57-552

89 x 760 mm / 4760 g

-

2

3253561575525

1-57-554

87 x 915 mm / 5210 g

-

2

3253561575549



STEELMASTER AXE

- Head/handle assembly can withstand pulling forces in excess of 3 metric tonnes
- Protective head cover with belt clip
- Heat treated seamless tubular steel shaft for improved safety
- Ergonomic, non-slip, solvent resistant grip

STANLEY

i

☰

☒

|||||

1-51-030

600 g

-

6

3253561510304



CAMPER'S HATCHET

- Forged, head treated and ground carbon steel head
- Ash handle securely triple wedged of security
- Handle shaped for good grip end efficient performance

STANLEY

i

☰

☒

|||||

1-59-066

600 g

-

6

3253561590665

1-59-068

800 g

-

6

3253561590689

1-59-070

1000 g

-

6

3253561590702



ALAN'S ADVICE

HOW TO CHOOSE THE HAMMER

In all cases, especially where it is intended to use a hammer for prolonged periods, you should choose a FatMax® ANTIVIBE model, which virtually eliminates all vibration, preventing the risk of repetitive strain injuries.

Claw Hammers

Ideal for general construction, roofing and flooring.

There are two types of claw hammer, the ripping or straight claw and the joiners or curved claw.

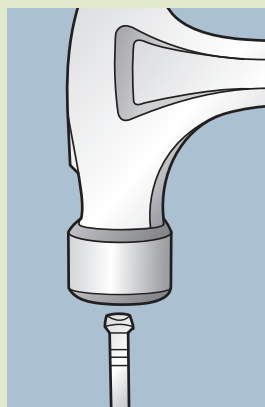
The ripping claw is ideal for pulling up floorboards or ripping out unwanted studwork, whilst the curved claw is better for pulling nails.

The striking face should be fully hardened and slightly convex to resist wear, whilst the outer circumference of the head should be 'rim tempered' (slightly less hard) in order to minimise the possibility of small fragments flying off, if struck against an even harder surface.

Look carefully for a claw that is precision ground on the outer facing edges.

The claw must be hardened and preferably tempered in oil to create a tougher structure that will bite into the shank of a nail and also resist fracture. The true test of a quality claw hammer is its ability to pull a nail by gripping the shaft, not by hooking under the head of the nail.

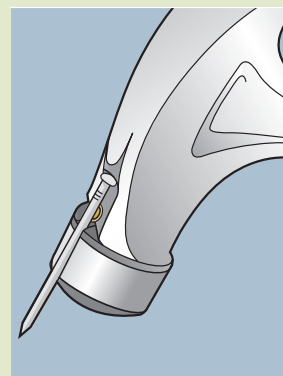
The magnetic nail holder on the XL hammer is invaluable when you want to insert a nail in a hard to reach position where it is just not possible to hold the nail in your hand.



Choosing the right weight of hammer is also important as there is no benefit in lifting a 22oz hammer to drive nails no longer than 50mm (2").

In the same way a 16 oz hammer will make heavy work in driving a 75mm nail.

As a reasonable compromise a 20oz claw hammer is a good general-purpose choice.



Cross Pein Hammers

Lighter hammers for smaller nails and pins.

The Warrington cross pein is a much lighter tool available in weights from 60oz to 120oz and the cross pein is useful in starting the nail off. For very fine panel pins choose the pin hammer, which has a longer handle and smaller diameter striking face.

Ball Pein - foreengineers and mechanics

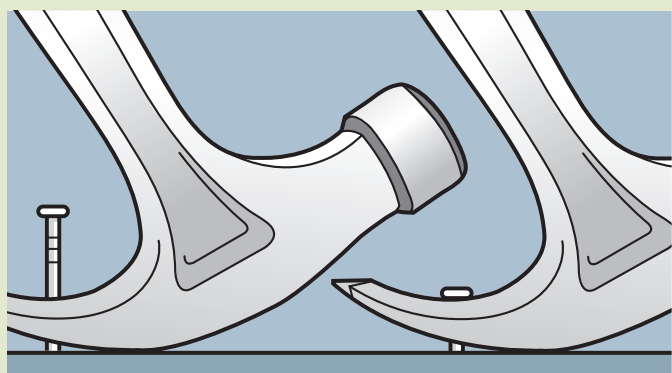
These hammers are used mainly in engineering and automotive applications. The ball pein end has several functions, but mainly used for swaging rivets.

Club & Drilling Hammers

This should be your only choice if you intend to strike a cold chisel. The striking face of the striking tool must be larger than the chisel to be struck otherwise there is a serious risk of injury from flying metal splinters, particularly if the chisel has been allowed to mushroom too much.

Specialist Hammers

Stanley also offer a range of specialist hammers including brick hammers, sledge hammers, a dual purpose hammer/hatchet and a drywall hammer designed for plasterboard installation.





ALAN'S ADVICE

TIPS AND TRICKS

Using a hammer is obviously very simple, but these simple tips will help you use one more effectively and with less effort.

TIP 1 Hold the handle near to the end of the grip so that your little finger rests up against the 'hook' shape at the extremity of the handle; this will enable you to maintain a secure grip without having to use all the strength in your hand to hold on. Relax.

TIP 2 Take a moment to look at your stance; for best performance a right-handed user should place the left foot forward and the right foot set back a little and at right angles to the left. This will give a firm, stable base for working.

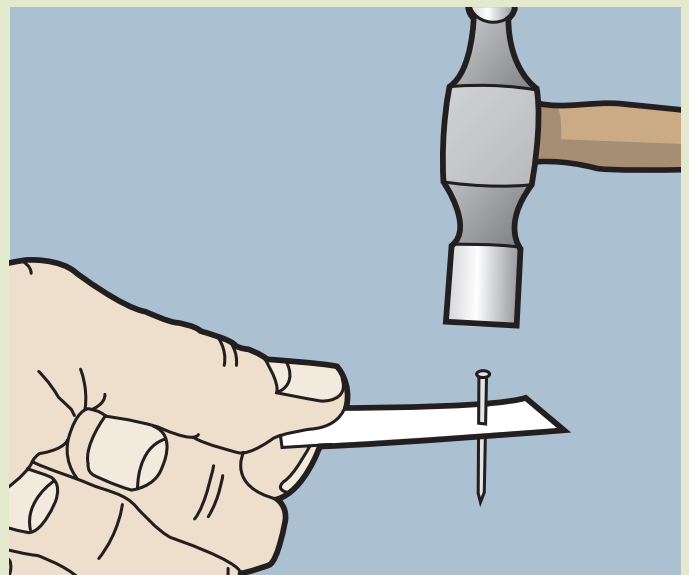
TIP 3 Move the position of your feet to adjust the height of your shoulders, which ideally need to be such that you are striking the head of the nail horizontally. If your right hand is too low you will tend to bend the nail away from you and if too high it will bend towards you.

TIP 4 Position the nail and while still holding it in place tap it a few times to set it firmly into the wood, at least 12mm for a 75mm nail, then raise the hammer a little higher and strike more firmly until the nail is flush.

TIP 5 Withdrawing a nail with a claw hammer can be done in two ways either by hooking the nail head into the claw of the hammer or by making the claws bite into the shank of the nail. If you are pulling a long nail it is best to engage the nail as near to the point where it enters the wood, place a piece of waste material under the front curve of the head to avoid damaging the wood, then lever toward you gently, avoid jerking on the handle. As the nail emerges either reposition the claw lower down the shaft or insert a thicker piece of scrap to ensure that you continue to pull the nail vertically.

TIP 6 For finish trim or bench work take care not to over hit the nail. Use a Stanley Nail Set to drive pointed head panel pins flush or even below the surface. The countersunk pin can then be filled for a perfect, invisible fixing.

TIP 7 Short (12mm) fine panel pins are hard to hold in place when starting even when using a cross pein hammer. Why not press the pin through a piece of cardboard, hold it in position with your fingers a safe distance away and then tap the pin in place removing the card at the last minute. There are many other devices both commercial and improvised that will serve the same purpose.



TOP TIP Buy the best never compromise on your choice of hammer.

- Never strike anything with the cheeks of the hammer head, because they are not hardened
- For hardened masonry nails use a club hammer and never a normal nail hammer
- Only use a club hammer for striking cold chisels and always wear safety goggles and gloves
- When striking cold chisels or punches the hammer head should be at least 10mm larger than the area to be struck
- With a new hammer it's a good idea to remove the protective lacquer on the striking face with medium grit glass paper in order to reduce the risk of the hammer slipping off the nail head

DEMOLITION TOOLS

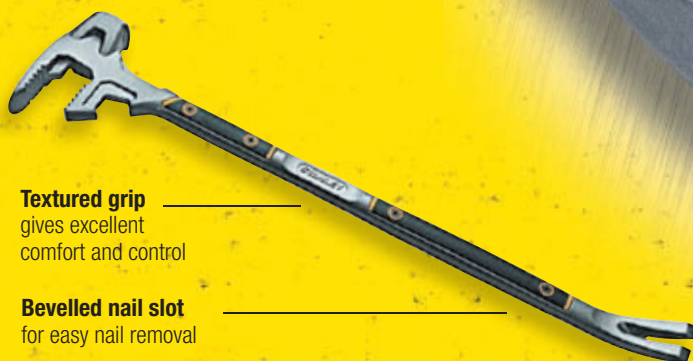
Demolition or „refurbishment” is a major part of the construction industry. Ripping out of kitchens and bathrooms etc. is a daily activity, which is why Stanley has created a comprehensive range of specialist tool to meet every requirement.

FatMax[®] XL[™]

FuBar[™] III FatMax[®] XL[™]

4-in-1 TOOL FOR PRYING, SPLITTING, BOARD BENDING AND STRICKING JOBS

- One piece forged steel head and handle
- 2 tier board grabber (2 x 4 & decking)
- One piece steel sledge hammer
- Precision prying claw
- Drywall ripping hook
- Textured rubber grip
- Nail puller
- Pry bar
- Heat treated and tempered striking face
- Tempered steel prevents chipping
- I-beam construction
- Durability
- Added strength
- Textured grip provides comfort and control



Textured grip
gives excellent
comfort and control

Bevelled nail slot
for easy nail removal

Tempered striking/struck face
prevents chipping

One piece forged steel bar
increases durability

Two tiered jaws
ideal for grabbing
standard size of
timber and decking



1-55-120

FuBar III 760 mm

-

1

3253561551208

FatMax[®]



FuBar[™] II FatMax[®] 4-in-1 TOOL FOR PRYING, SPLITTING, BOARD BENDING AND STRICKING JOBS

- Lighter weight more suited to repetitive striking
- One piece forged carbon steel bar for increased durability
- Serrated gripping jaw
- Tempered steel prevents chipping
- Textured grip for comfort and control
- Fits in hammer loop
- Nail puller, Chisel-point pry bar



1-55-119

FuBar II 380 mm

-

2

3253561551192

9-55-119

merchandise 4 pcs

-

4

3253569551194

FatMax[®] XL[™]



FuBar[™] FatMax[®] XL[™]

- One piece forged steel head and handle
- 2 tier board grabber (2 x 4 & decking)
- One piece steel sledge hammer
- Precision prying claw
- Drywall ripping hook
- Textured rubber grip
- Nail puller
- Pry bar
- Heat treated and tempered striking face
- I-beam construction
- Durability
- Added strength
- Textured grip provides comfort and control
- Tempered steel prevents chipping



1-55-099

FuBar 457 mm

-

2

3253561550997

DEMOLITION TOOLS

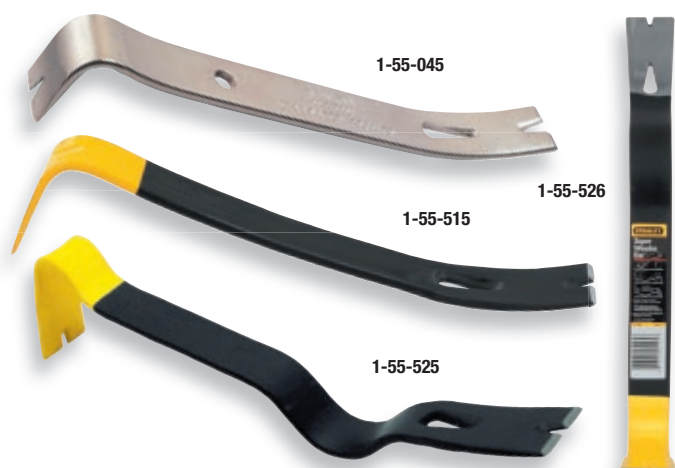
FatMax®



FatMax® WRECKING BAR

- Contoured bar makes pulling nails, prying and lifting easier
- Heat treated for increased durability
- Slotted claw and beveled ends improve functionality and performance
- High-visibility, powder-coated finish
- Bevelled nail slot for easy lifting
- Forged high carbon steel designed to withstand 975ft-lbs of bending momentum
- Tri lobe design for increased strength and durability

STANLEY	i		☒	
1-55-101	Ø 20 mm x 360 mm	-	4	3253561551017
1-55-102	Ø 26 mm x 610 mm	-	4	3253561551024
1-55-104	Ø 26 mm x 910 mm	-	4	3253561551048



Wonder Bar®

- High visibility, powder coated finish
- Polished tips and bevelled nail slots - excellent for pulling nails, lifting or prying
- Polished and beveled cutting edges
- Contoured bar makes pulling nails, prying and lifting easier
- Forged, high carbon steel for increased steel and durability
- Heat treated, forged high carbon steel for increased durability

STANLEY	i		☒	
1-55-045	Mini Wonder Bar, 180 mm	X	6	3253561550454
1-55-515	Wonder Bar, 320 mm	-	4	3253561555152
1-55-525	Super Wonder Bar, 380 mm	-	4	3253561555251
1-55-526	Wonder Bar X21, 530 mm	-	4	3253561555268



CLAW BAR

- Heat treated for increased durability and resistance to bending
- Heat treated, forged high carbon steel for increased durability
- Polished bevelled claws allow precision nail pulling and prying
- Polished, beveled claws allow for precision nail pulling and prying
- Flat striking face allows claw to be driven under deeply embedded nails
- Contoured bar makes pulling nails, prying and lifting easier
- High visibility, powder coated finish

STANLEY	i		☒	
0-55-113	Claw, 8" / 200 mm	X	2	3253560551131
0-55-114	Claw, 10" / 250 mm	X	2	3253560551148
0-55-115	Claw, 12" / 300 mm	X	2	3253560551155
0-55-116	Moulding, 8" / 200 mm	X	2	3253560551162
0-55-117	Moulding, 10" / 250 mm	X	2	3253560551179



NAIL CLAW - BAR

- Ended nail claw features for difficult to reach places
- Special extracting claw
- High visibility, powder coated finish
- Heat treated, forged high carbon steel for increased durability

STANLEY	i		☒	
0-55-033	Nail claw, 10" / 250 mm	X	6	3253560550332
1-55-118	Ripping Bar, 18" / 460 mm	-	6	3253561551185
1-55-124	Ripping Bar, 24" / 610 mm	-	6	3253561551246
1-55-136	Ripping Bar, 36" / 910 mm	-	6	3253561551369
1-55-818	Offset Pattern Ripping Chisel, 17" / 430 mm	-	5	3253561558184
1-55-155	500 mm		6	8001140551553
1-55-156	600 mm		6	8001140551560
1-55-157	700 mm		6	8001140551577

COLD CHISELS

Cold chisels and brick bolsters that are full hardened and tempered for cutting brickwork and concrete.

Engineers' Cold Chisels are for cutting and shaping cast iron, wrought iron, mild steel, brass, cooper, aluminium, nits, bolts and rivets.

FatMax®

Bi-material handguards

for increased comfort and protection from overstrike

Hardened, quenched & tempered

to precise specifications for added safety

Forged from Chrome Vanadium steel

for increased strength and durability and less grinding

Stanley bladed holds

its edge longer so eaves time re-sharpening



4-18-330



4-18-333



4-18-331



4-18-327



4-18-332



4-18-329

FatMax® COLD CHISEL

STANLEY	i		☒	
4-18-333	Mason's, 45 x 250 mm	X	3	3253564183338
4-18-334	Mason's 70 x 215 mm	X	3	3253564183345
4-18-327	Brick Set, 76 x 215 mm	X	3	3253564183277
4-18-328	Brick Set, 100 x 215 mm	X	3	3253564183284
4-18-331	Floor, 75 x 275 mm	X	3	3253564183314
4-18-330	Electrician's, 55 x 250 mm	X	3	3253564183307
4-18-332	Cold (Long), 25 x 300 mm	X	3	3253564183321
4-18-329	Concrete, 19 x 300 mm	X	3	3253564183291

COLD CHISEL

- Quality chrome vanadium steel

- Quenched and tempered to precise specifications for added safety



STANLEY	i		☒	
4-18-286	Cold Chisel, 10 x 140 mm	X	3	3253564182867
4-18-287	Cold Chisel, 12 x 150 mm	X	3	3253564182874
4-18-288	Cold Chisel, 16 x 170 mm	X	3	3253564182881
4-18-289	Cold Chisel, 19 x 175 mm	X	3	3253564182898
4-18-290	Cold Chisel, 22 x 200 mm	X	3	3253564182904
4-18-291	Cold Chisel (Long), 25 x 300 mm	X	3	3253564182911
4-18-292	Utility Chisel (Flat), 32 x 300 mm	X	3	3253564182928
4-18-298	zestaw 3 szt.	X	3	3253564182980
4-18-299	12 pce Punch & Chisel Kit	X	3	3253564182997

FLOOR CHISEL

- Quality chrome vanadium steel
- Designed with offset blade and shorter bite for increased leverage
- Hardened, quenched and tempered to precise specifications for added safety

- Stanley blade holds its edge for longer and as a result need to be sharpened less frequently
- Forged from chrome vanadium steel for increased strength and durability



STANLEY	i		☒	
4-18-293	Floor Chisel, 75 x 275 mm	X	3	3253564182935

COLD CHISELS, CENTRE PUNCH



BRICK SET

- Quality chrome vanadium steel
- One-piece construction forged from quality chrome vanadium steel for increased strength and durability
- Powder coat finish for increased visibility
- Quenched & tempered to precise specifications for added safety

STANLEY	i			
4-18-296	Brick Set, 75 x 215 mm	X	3	3253564182966
4-18-297	Brick Set, 100 x 215 mm	X	3	3253564182973
4-18-294	Mason's Chisel, 45 x 215 mm	X	3	3253564182942
4-18-295	Mason's Chisel, 70 x 215 mm	X	3	3253564182959



CENTER AND PIN PUNCH

- Quenched & tempered to precise specifications
- Quality chrome vanadium steel
- Powder coat finish for increased visibility
- One-piece construction forged from tempered tool steel for strength and longer life

STANLEY	i			
4-18-226	6 pce Punch Kit	X	3	3253564182263
4-18-227	Centre Punch, 6 x 100 mm	X	3	3253564182270
4-18-228	Centre Punch, 8 x 110 mm	X	3	3253564182287
4-18-229	Startet Punch, 2 x 140 mm	X	3	3253564182294
4-18-230	Punch, 1,5 x 150 mm	X	3	3253564182300
4-18-231	Punch, 3 x 150 mm	X	3	3253564182317
4-18-232	Punch, 4 x 150 mm	X	3	3253564182324
4-18-233	Punch, 5 x 150 mm	X	3	3253564182331
4-18-234	Punch, 6 x 150 mm	X	3	3253564182348
4-18-235	Punch, 8 x 150 mm	X	3	3253564182355
4-18-236	punktak murarski, 10 x 140 mm	X	3	3253564182362



NAIL PUNCH

- Square head
- Milled body
- All steel hardened and tempered
- Chamfered polished points

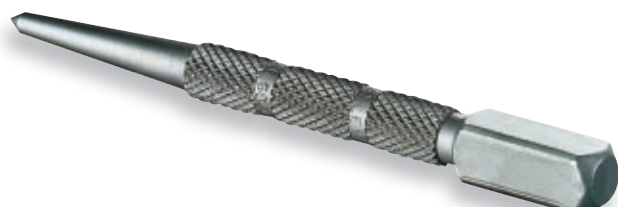
STANLEY	i			
0-58-111	ø 0,8 x 102 mm	X	10	3253560581114
0-58-112	ø 1,6 x 102 mm	X	6	3253560581121
0-58-113	ø 2,4 x 102 mm	X	6	3253560581138
0-58-114	ø 3,2 x 102 mm	X	10	3253560581145



DYNAGRIP NAIL PUNCH SET

- Long bevelled point for a better alignment
- Elastomer handle for a good hand grip
- Three coded sizes, coloured for better identification
- In tempered steel for long life

STANLEY	i			
0-58-930	ø 0,8; 1,6; 2,4 mm, kit 3 pcs	X	6	3253560589301
0-58-911	ø 0,8 mm	X	6	3253560589110
0-58-912	ø 1,6 mm	X	6	3253560589127
0-58-913	ø 2,4 mm	X	6	3253560589134



CENTRE PUNCH

- Crenelated handle with square head
- Milled body for accuracy
- Hardened and tempered alloy steel for durability
- Square head, chamfered polished points

STANLEY	i			
0-58-120	3,2 x 101 mm	X	6	3253560581206



ALAN'S ADVICE

HOW TO CHOOSE WONDER BAR?

Wonder Bars

Extremely useful prying, nail pulling and levering tools in a wide range of sizes.

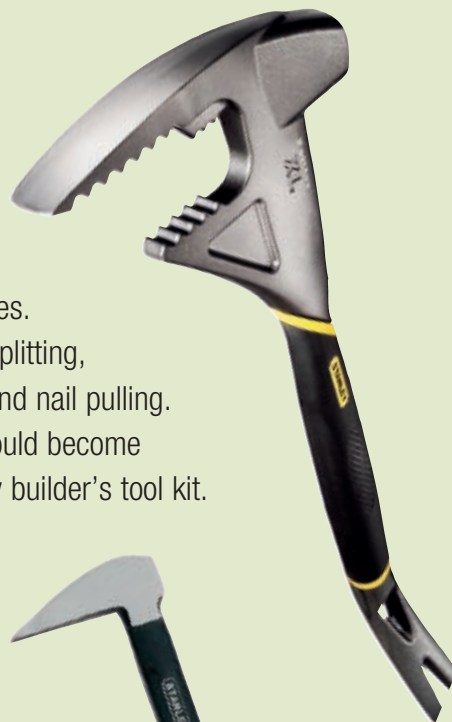


Demolition & Ripping Bars

Forged hook and claw ended bars capable of undertaking the heaviest of demolition jobs.

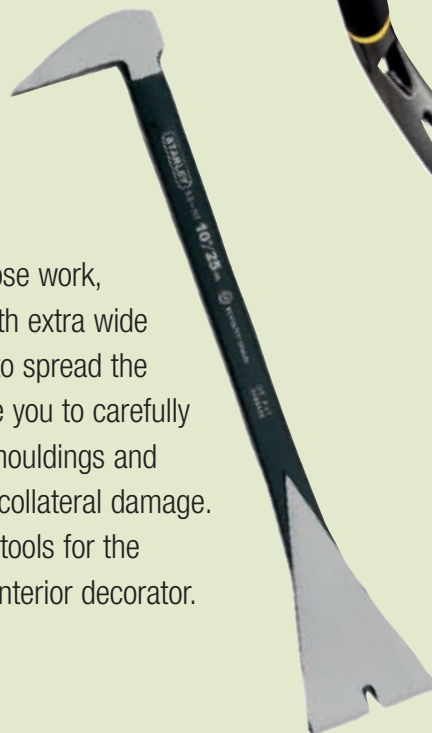
FuBars

A unique Stanley multi-purpose tool available in three sizes. They can tackle prying, splitting, board bending, striking and nail pulling. The FatMax XL FuBar should become an essential part of every builder's tool kit.



Precision Pry Bars

Shorter bars for close work, including some with extra wide levering surfaces to spread the load, which enable you to carefully lever off existing mouldings and trim with minimal collateral damage. These are perfect tools for the kitchen fitter and interior decorator.



TIPS AND TRICKS

TIP 1 Cutting bricks and blocks should be done with a brick bolster and club hammer. Make a light cut on every face of the brick and then complete the cut with a firmer blow on the bolster until the cut is completed cleanly.

TIP 2 Smaller holster type chisels are available for removing ceramic tiles from walls and floors. The secret is in positioning the chisel edge at the correct angle between the tile and the floor; a sharp blow from the club hammer should be enough to break the tile from the floor.

TIP 3 Natural stone has a grain structure somewhat like wood but much less predictable. Avoid making heavy cuts in the middle of the stone, as the result is likely to be a complete shattering of the stone. Work carefully at the edges with the chisel angled away from the body of the stone. Make light cuts.

If You work with stone, always use a gloves and glasses.

SURFORM

The Stanley Surform is ideal for shaping practically every kind of material. The blade has up to 450 precision sharpened and hardened teeth set to produce a consistent depth and quality of cut. Nothing to sharpen or set and nothing to adjust.



SURFORM METAL BODY CONVERTIBLE PLANERFILE

- Polypropylene handle and die cast alloy body for strength and durability
- Fitted with replaceable standard cut blade
- Can be set in two positions to be used as either a plane or a file
- Supplied with a blade for standard work 21-293

5-21-122	310 mm	X	2	3253565211221



SURFORM STANDARD METAL BODY PLANE

- Takes all types of blade that are 250 mm long
- Used as a plane for trimming or levelling
- Grooved front leaning handle for greater precision
- Polypropylene handle and die cast alloy body for strength and durability
- Supplied with a blade for standard work 21-293

5-21-296	315 mm	X	2	3253565212969



SURFORM METAL BODY FLAT FILE

- Accepts all types of 250 mm long blades - for versatility
- Grooved front leaning handle for greater precision
- For use with push or pull action depending on direction of blade installation
- Strong heavy-duty metal body with rear removable robust handle in yellow polypropylene
- Supplied with a blade for standard work 21-293

5-21-295	440 mm	X	2	3253565212952



SURFORM METAL BODY BLOCK PLANE

- Thumb screw for quick blade release - no tools required
- Practical and handy - It can be used with a single hand
- Instant mounting and dismounting of the blade using a wing nut
- Strong heavy-duty metal body for strength and durability

5-21-399	153 mm	X	2	3253565213997



SURFORM ROUND FILE

- For enlarging holes and shaping tightly curved surfaces
- Tough Polypropylene handle for strength and durability
- Uses a 250 mm long blade 21-291

5-21-297	400 mm	X	2	3253565212976



SURFORM MOULDED BODY FLAT FILE

- Lightweight plastic moulded body for strength and durability
- Compact tool with curved blade for increased stock removal
- Simple click on blade replacement - no tools required
- Uses all types of 140 mm long blades

5-21-102	305 mm	X	6	3253565211023



SURFORM MOULDED BODY PLANE

- Uses all types of 250 mm long blades
- Thumb screw for quick blade release - no tools required
- General purpose use
- Lightweight plastic moulded body for strength and durability

5-21-103	270 mm	X	6	3253565211030



SURFORM MOULDED BODY BLOCK PLANE

- Uses all types of 140 mm long blades
- Can be operated with a single hand and is therefore very easy to use
- Instant mounting and dismounting of blade
- Lightweight plastic moulded body for strength and durability

5-21-104	155 mm	X	6	3253565211047



SURFORM MOULDED BODY SHAVER TOOL

- Lightweight plastic moulded body for strength and durability
- Simple click on blade replacement - no tools required
- Moulded handle which is practically unbreakable
- Uses the 65 mm long 21-515 blade



5-21-115

185 mm

X

6

3253565211153



SURFORM ROUND BLADE

- Will fit 21-297
- 250mm round blade for enlarging holes and shaping tight curved surfaces



5-21-291

250 mm

X

6

3253565212914



STANDARD CUT BLADE

- Standard cut blade features teeth flush to the blade edge for working into edges
- Use on wood, vinyl, plaster thermalite, fiberglass and linoleum
- Will fit; 21-122, 21-295, 21-296, 21-103



5-21-293

250 mm

X

12

3253565212938



SURFORM HALF ROUND BLADE

- Will fit 21-122, 21-295, 21-296 and 21-203
- For fast stock removal and shaping curved surfaces
- Will fit all 250mm surform frames



5-21-299

250 mm

X

12

3253565212990



SURFORM FINE CUT BLADE

- For fine finishes on hard wood, end grain and some soft metals 21-398 fits 21-399, 21-102 and 21-104, 21-383 fits 21-103, 21-122, 21-295, 21-296

STANLEY	i			
5-21-398	140 mm	X	12	3253565213980
5-21-393	250 mm	X	12	3253565213935



SURFORM METAL AND PLASTICS BLADE

- Will fit 21-122, 21-295 21-296 and 21-203
- Will fit all 250mm surform frames
- Special flat blade for soft metals and plastics

STANLEY	i			
5-21-508	250 mm	X	12	3253565215083



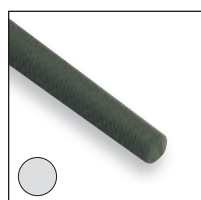
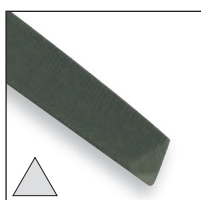
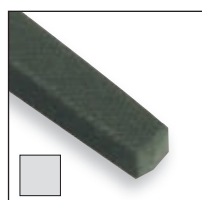
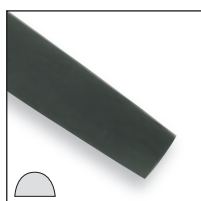
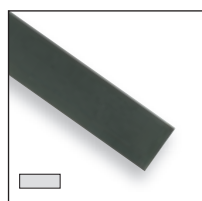
SHAVERTOOL BLADE

- For fast stock removal
- Will fit 21-115
- Works on pull stroke
- Small curved blade for trimming work

STANLEY	i			
5-21-515	63 mm	X	12	3253565215151

Surform Tool and Blade Chart		Standard Cut Blade 21-293	Surform Fine Cut Blade 21-393	Surform Fine Cut Blade 21-398	Surform Half Round Blade 21-299	Surform Metal and Plastics Blade 21-508	Surform Round Blade 21-291	Shaverfoot Blade 21-515
Surforms type	Hardwood	X	X	X	X		X	X
	Softwood	X	X	X	X		X	X
	End Grain		X	X				
	Chipboard	X			X		X	X
	Plywood	X			X		X	X
	Blockboard	X			X		X	X
	Vinyl	X	X	X	X		X	X
	Rubber	X			X		X	X
	Plaster	X	X	X	X		X	X
	Thermalite	X			X		X	X
	Chalk	X			X		X	X
	Fiberglass	X			X		X	X
	Brass		X	X				
	Lead		X	X				X
	Aluminium		X	X				
	Cooper		X	X				
	Mild Steel		X	X				
	Plastic Laminates							X
	Plastic Fillers	X	X	X	X		X	X
	Nylon	X			X		X	X
	Linoleum	X			X		X	X
Surforms type		21-295 21-296 21-103 21-122	21-295 21-296 21-103 21-122	21-399 21-102 21-104	21-295 21-296	21-295 21-296 21-103 21-122	21-297	21-115

**NEW
PRODUCT**

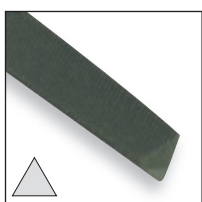


HAND FILE

- High carbon steel for sharpness retention
- Ergonomic, slip resistant design for increased comfort
- Bi-Material handle reduces vibrations
- Hang hole in handle for ease of storage

STANLEY	i		×	
0-22-486	flat, bastard cut - 150 mm	X	3	3253560224868
0-22-441	flat, bastard cut - 200 mm	X	3	3253560224417
0-22-450	flat, second cut - 150 mm	X	3	3253560224509
0-22-451	flat, second cut - 200 mm	X	3	3253560224516
0-22-499	flat, smooth cut - 200 mm	X	3	3253560224998
0-22-494	half round, bastard cut - 150 mm	X	3	3253560224943
0-22-498	half round, bastard cut - 250 mm	X	3	3253560224981
0-22-501	half round, bastard cut - 200 mm	X	3	3253560225018
0-22-455	half round, second cut - 150 mm	X	3	3253560224554
0-22-456	half round, second cut - 200 mm	X	3	3253560224561
0-22-457	square, bastard cut - 150 mm	X	3	3253560224578
0-22-458	square, second cut - 150 mm	X	3	3253560224585
0-22-497	3 squared, bastard cut - 150 mm	X	3	3253560224974
0-22-460	3 squared, bastard cut - 200 mm	X	3	3253560224608
0-22-461	3 squared, second cut - 150 mm	X	3	3253560224615
0-22-462	3 squared, second cut - 200 mm	X	3	3253560224622
0-22-463	3 squared, smooth cut - 150 mm	X	3	3253560224639
0-22-442	round, bastard cut - 150 mm	X	3	3253560224424
0-22-443	round, bastard cut - 200 mm	X	3	3253560224431
0-22-496	round, second cut - 150 mm	X	3	3253560224967
0-22-444	round, second cut - 200 mm	X	3	3253560224448

**NEW
PRODUCT**



CHAIN SAW FILE

- High carbon steel for sharpness retention
- Ergonomic, slip resistant design for increased comfort
- Bi-Material handle reduces vibrations
- Hang hole in handle for ease of storage

STANLEY	i		×	
0-22-491	for chain saw Ø 4.0 x 200 mm	X	3	3253560224912
0-22-476	for chain saw Ø 4.5 x 200 mm	X	3	3253560224769
0-22-492	for chain saw Ø 4.8 x 200 mm	X	3	3253560224929
0-22-481	for chain saw Ø 5.5 x 200 mm	X	3	3253560224813
0-22-487	taper saw, second cut - 150 mm	X	3	3253560224875
0-22-488	taper saw, smooth cut - 150 mm	X	3	3253560224882
0-22-495	taper saw, smooth cut - 150 mm	X	3	3253560224950
0-22-490	taper saw, second cut - 150 mm	X	3	3253560224905

FILE SET

- High carbon steel for sharpness retention
- Ergonomic, slip resistant design for increased comfort
- Hang hole in handle for ease of storage

**NEW
PRODUCT**



STANLEY	i		×	
0-22-445	3pc set (150 mm - Slim Taper 2nd Cut, Round, Mill), Bastard Cut	X	3	3253560224455
0-22-464	3pc Set (200 mm - Hand File, 2nd cut, 8" Half Round, 2nd cut, 8	X	3	3253560224646
0-22-500	6pc needle file set	X	10	3253560225001

RASP

**NEW
PRODUCT**



RASP

- High carbon steel for sharpness retention
- Ergonomic, slip resistant design for increased comfort
- Bi-Material handle reduces vibrations
- Hang hole in handle for ease of storage

STANLEY	i		☒	
0-22-465	flat, bastard cut - 200 mm	X	3	3253560224653
0-22-478	flat, bastard cut - 250 mm	X	3	3253560224783
0-22-467	flat, second cut - 200 mm	X	3	3253560224677
0-22-468	flat, second cut - 250 mm	X	3	3253560224684
0-22-469	half round, bastard cut - 200 mm	X	3	3253560224691
0-22-470	half round, bastard cut - 250 mm	X	3	3253560224707
0-22-471	half round, second cut - 200 mm	X	3	3253560224714
0-22-472	half round, second cut - 250 mm	X	3	3253560224721
0-22-473	round, bastard cut - 200 mm	X	3	3253560224738
0-22-474	round, bastard cut - 250 mm	X	3	3253560224745
0-22-475	round, second cut - 200 mm	X	3	3253560224752
0-22-479	round, second cut - 250 mm	X	3	3253560224790



3 PIECE RASP SET

- High carbon steel for sharpness retention
- Ergonomic, slip resistant design for increased comfort
- Bi-Material handle reduces vibrations
- Hang hole in handle for ease of storage

**NEW
PRODUCT**

STANLEY	i		☒	
0-22-477	(200 mm: Flat Rasp Bastard Cut, Half Round Rasp, Bastard Cut, Round Rasp, Bastard Cut)	X	3	3253560224776

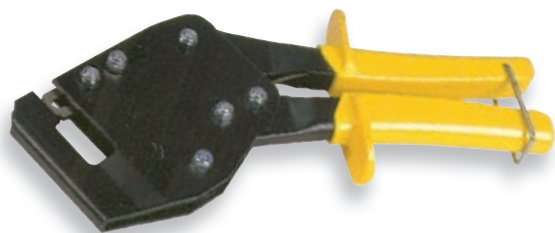
TOOLS FOR PLASTER BOARDS AND FINISH WORK



DRYWALL SCREW ADAPTER

- Magnetic adapter for Phillips n° 2 screw-in tip
- For plasterboard screw

STANLEY				
15-840	Ph 2	-	6	0843891584002



STUD CRIMPING TOOL

- Single-handed crimping to easier use
- Ensures profiles are attached permanently

STANLEY				
1-69-100	260 mm	-	50	3253561691003



PLASTER BOARD CRIMPING PLIER

- For setting the metal sections without screws or nails

STANLEY				
15-273	280 mm	-	20	5000366152738
15-261	350 mm	-	20	5000366152615



PLASTERBOARD CUTTER

- Special plasterboard cutter to cut plaster boards of 9.5 to 15 mm in thickness
- Maximum cutting width: 12 cm
- 15-266 – cutting wheel

STANLEY				
15-264	-	-	1	0843891526408
15-266	-	-	1	0843891526606



CIRCLE CUTTER

- For cutting perfect circles in plasterboards

STANLEY				
05-141	max Ø 400 mm	-	6	0843890514109

TOOLS FOR PLASTER BOARDS AND FINISH WORK



WALLBOARD HAMMER

- Round, corrugated head for a perfect nail position before driving and plastering
- Includes a keen edge and a nail wrench

STANLEY	i			
05-154	350 mm	-	20	0843890515403



BANJO - DRY TAPE

- Equipped with a tape cutting system
- Can contain up to 150 m of tape
- Keeps the tape clean and dry
- Easy to use

STANLEY	i			
15-301	-	-	1	0843891530108



UTILITY SANDER

- Sanding sheets kept firmly in place with wing screws
- Sanding pad reinforced with high-density foam
- Hand sander for large surfaces, in rigid and robust aluminum
- Inclined head

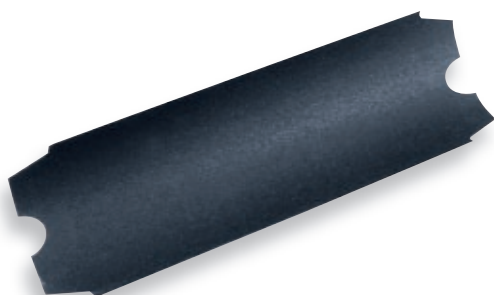
STANLEY	i			
15-353	1200 mm	-	2	0843891535301



HAND SANDER

- Wooden handle
- The abrasive element is blocked by butterfly screws
- Aluminium alloy body
- Lined with high-density foam

STANLEY	i			
05-447	24 x 8 cm	-	6	0843890544700



SANDPAPER GRAIN 80

- 10 sheets of 80 grain per pack
- The punch cutting sheets adapt to all types of Goldblatt sandpaper
- The abrasive net is impossible to stop up and is long-lasting

STANLEY	i			
14-151	80 grit	-	100	0843891415108

TOOLS FOR PLASTER BOARDS AND FINISH WORK



STAINLESS STEEL PAINTER'S KNIFE

- Synthetic handle riveted to the blade with striking area to drive in nails
- Stainless steel blade

STANLEY	i		☒	
05-540	100 mm	-	5	0843890554006
05-541	125 mm	-	5	0843890554105
05-542	150 mm	-	5	0843890554204



PAINTER'S KNIFE + PHILLIPS N°2 SCREW-IN TIP

- Synthetic handle riveted to the blade with Phillips n°2 screw-in tip
- Stainless steel blade

STANLEY	i		☒	
1-28-016	125 mm	-	5	3253561280160
1-28-017	125 mm	-	5	3253561280177
1-28-018	150 mm	-	5	3253561280184



INTERIOR ANGLE KNIFE

- Wooden handle
- Stainless steel blade preshaped at an angle of 103° and adjustable by pressure up to 90°

STANLEY	i		☒	
05-520	100 mm	-	6	0843890552002



FINE TOOTHED GLUE KNIFE

- Professional quality
- Blue steel blade
- Wooden handle
- Fine toothing

STANLEY	i		☒	
1-28-943	small 20 cm	-	10	3253561289439
1-28-944	big 20 cm	-	10	3253561289446
1-28-956	small 12 cm	-	10	3253561289569
1-28-957	big 12 cm	-	10	3253561289576



BOARD LIFTER WITH STIRRUP

- Adapts perfectly to the feet
- Allows the positioning and fixing of the plates without using the hands
- Foot-operated device for lifting plasterboard mould

STANLEY	i		☒	
05-173	-	-	15	0843890517308

TOOLS FOR PLASTER BOARDS AND FINISH WORK



PANEL CARRIER WITH HANDLE

- Equipped with two metal handles
- Covered by flexible elastomer to avoid marking the panel during transport

STANLEY

i

☑

☒

☑

05-175

2 pcs

-

1

0843890517506



BOARD CARRIER

- Synthetic, light, resistant body that does not damage the board
- Ergonomic lifting handle
- Carefully designed holding notch for efficient blocking of the panel during transport

STANLEY

i

☑

☒

☑

1-93-301

-

-

6

3253561933011



T-SQUARE

- Head notched for cutting in one go
- Precise and square
- Easy-to-read gradations

STANLEY

i

☑

☒

☑

05-123

1200 x 560 mm

-

3

0843890512303



BOARD LIFTER

- Made of steel profiles with tiltable plane in 2 directions for panels of 1.20 x 4.80 m
- Allows one person to install, maintain and attach large panels
- Maximum load: 65 kg
- Maximum height: 3.30 m
- Can be dismantled fully
- Feet and casters for easy movement
- Hand hoist equipped with guard against any untimely gear malfunction

STANLEY

i

☑

☒

☑

15-015

up to 65 kg, max height 3,35 m

-

1

0843891501504

TOOLS FOR PLASTER BOARDS AND FINISH WORK



WINDOW SCRAPER

- Ideal for removing excess paint/stickers from windows
- Supplied with 1 heavy duty blade
- Yellow plastic handle with Stanley heavy duty blade

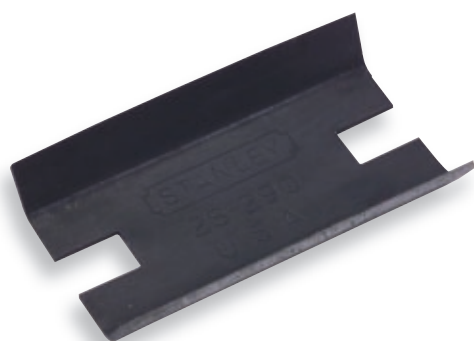
STANLEY	i			
0-28-590	scraper 170 x 60 mm	X	12	5000366105932
4-98-020	scraper 170 x 60 mm	-	500	3253564980203
1-11-916	blade 1992 with hole - 100 pcs	-	20	3253561119163
3-11-916	blade 1992 with hole - 10 pcs	X	10	3253563119161
6-11-916	blade 1992 - 10 x 10 pcs	-	1	3253566119168



PAINT SCRAPER

- Hardened resharpenable blade
- Possibility of storing an extra blade in the body
- 2-edged blade
- Synthetic handle scraper
- Four-edged blade, two edges for trimming
- Made of black plastic, black finish, with steel bolt heart

STANLEY	i			
0-28-617	38 x 180 mm	X	6	3253560286170
0-28-619	64 x 230 mm	X	6	3253560286194



PAINT SCRAPER SPARE

- Spare for 28-617, 28-619

STANLEY	i			
0-28-290	blade 38 mm for 28-617	X	5	3253560282905
0-28-292	blade 64 mm for 28-619	X	5	3253560282929



PROFESSIONAL GLASS SCRAPER

- Professional quality
- Retractable rectangular blade
- Brass push button
- Metal body

STANLEY	i			
0-28-500	40 mm x 95 mm	X	10	3253560285005
0-28-510	blade 40 mm - 10 pcs	X	10	3253560285104
1-11-515	blade 40 mm - 100 pcs	-	50	3253561115158

